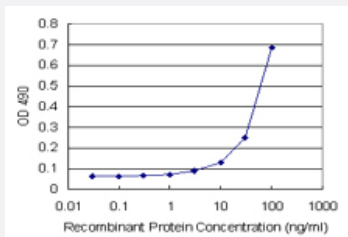


# REG1A (Human) Matched Antibody Pair

Catalog # H00005967-AP43

Size 1 Set

## Applications



Sandwich ELISA detection sensitivity ranging from 10 ng/ml to 100 ng/ml.

## Specification

<b>Product Description</b>	This antibody pair set comes with a matched antibody pair to detect and quantify the protein level of human REG1A.
<b>Reactivity</b>	Human
<b>Interspecies Antigen Sequence</b>	Mouse (81%); Rat (76%)
<b>Quality Control Testing</b>	Standard curve using recombinant protein ( H00005967-Q01 ) as an analyte. Sandwich ELISA detection sensitivity ranging from 10 ng/ml to 100 ng/ml.
<b>Supplied Product</b>	Antibody pair set content: 1. Capture antibody: mouse monoclonal anti-REG1A (100 ug) 2. Detection antibody: biotinylated mouse monoclonal anti-REG1A, IgG2a Kappa (50 ug) *Reagents are sufficient for at least 3-5 x 96 well plates using recommended protocols.
<b>Storage Instruction</b>	Store reagents of the antibody pair set at -20°C or lower. Please aliquot to avoid repeated freeze thaw cycle. Reagents should be returned to -20°C storage immediately after use.

## Applications

- ELISA Pair (Recombinant protein)

[Protocol Download](#)

## Gene Info — REG1A

**Entrez GeneID** [5967](#)

**Gene Name** REG1A

**Gene Alias** ICRF, MGC12447, P19, PSP, PSPS, PSPS1, PTP, REG

**Gene Description** regenerating islet-derived 1 alpha

**Omim ID** [167770](#)

**Gene Ontology** [Hyperlink](#)

**Gene Summary** This gene is a type I subclass member of the Reg gene family. The Reg gene family is a multigenic family grouped into four subclasses, types I, II, III and IV, based on the primary structures of the encoded proteins. This gene encodes a protein that is secreted by the exocrine pancreas. It is associated with islet cell regeneration and diabetogenesis and may be involved in pancreatic lithogenesis. Reg family members REG1B, REGL, PAP and this gene are tandemly clustered on chromosome 2p12 and may have arisen from the same ancestral gene by gene duplication. [provided by RefSeq]

**Other Designations** OTTHUMP00000160485|islet cells regeneration factor|islet of langerhans regenerating protein|lithostathine 1 alpha|pancreatic stone protein, secretory|pancreatic thread protein|protein-X|regenerating islet-derived 1 alpha (pancreatic stone protein, pancrea

## Disease

- [Calcinosis](#)
- [Diabetes Mellitus](#)
- [Pancreatitis](#)
- [Tobacco Use Disorder](#)