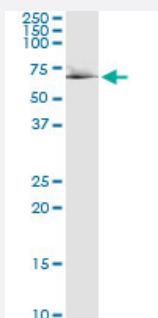


# RDX (Human) IP-WB Antibody Pair

Catalog # H00005962-PW1

Size 1 Set

## Applications



Immunoprecipitation of RDX transfected lysate using rabbit polyclonal anti-RDX and Protein A Magnetic Bead ([U0007](#)), and immunoblotted with mouse purified polyclonal anti-RDX.

## Specification

<b>Product Description</b>	This IP-WB antibody pair set comes with one antibody for immunoprecipitation and another to detect the precipitated protein in western blot.
<b>Reactivity</b>	Human
<b>Quality Control Testing</b>	Immunoprecipitation-Western Blot (IP-WB) Immunoprecipitation of RDX transfected lysate using rabbit polyclonal anti-RDX and Protein A Magnetic Bead ( <a href="#">U0007</a> ), and immunoblotted with mouse purified polyclonal anti-RDX.
<b>Supplied Product</b>	Antibody pair set content: 1. Antibody pair for IP: rabbit polyclonal anti-RDX (300 ul) 2. Antibody pair for WB: mouse purified polyclonal anti-RDX (50 ug)
<b>Storage Instruction</b>	Store reagents of the antibody pair set at -20°C or lower. Please aliquot to avoid repeated freeze thaw cycle. Reagents should be returned to -20°C storage immediately after use.

## Applications

- Immunoprecipitation-Western Blot

[Protocol Download](#)

## Gene Info — RDX

Entrez GeneID	<a href="#">5962</a>
Gene Name	RDX
Gene Alias	DFNB24
Gene Description	radixin
Omim ID	<a href="#">179410 611022</a>
Gene Ontology	<a href="#">Hyperlink</a>
Gene Summary	Radixin is a cytoskeletal protein that may be important in linking actin to the plasma membrane. It is highly similar in sequence to both ezrin and moesin. The radixin gene has been localized by fluorescence in situ hybridization to 11q23. A truncated version representing a pseudogene (RDXP2) was assigned to Xp21.3. Another pseudogene that seemed to lack introns (RDXP1) was mapped to 11p by Southern and PCR analyses. [provided by RefSeq]
Other Designations	-

## Pathway

- [Regulation of actin cytoskeleton](#)

## Disease

- [Genetic Predisposition to Disease](#)
- [Glaucoma](#)