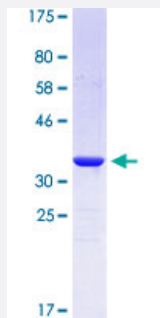


RCVRN (Human) Recombinant Protein (Q04)

Catalog # H00005957-Q04

Size 25 ug, 10 ug

Applications



Specification

Product Description	Human RCVRN partial ORF (NP_002894.1, 3 a.a. - 99 a.a.) recombinant protein with GST tag at N-terminal.
Sequence	NSKSGALSKEILEELQLNTKFSEELCSWYQSFLKDCPTGRITQQQFQSIYAKFFPDTPKAYAQH VFRSFDNLDGTLDFKEYVIALHMTTAGKTN
Host	Wheat Germ (in vitro)
Theoretical MW (kDa)	36.3
Preparation Method	in vitro wheat germ expression system
Purification	Glutathione Sepharose 4 Fast Flow
Quality Control Testing	12.5% SDS-PAGE Stained with Coomassie Blue
Storage Buffer	50 mM Tris-HCl, 10 mM reduced Glutathione, pH=8.0 in the elution buffer.
Storage Instruction	Store at -80°C. Aliquot to avoid repeated freezing and thawing.
Note	Best use within three months from the date of receipt of this protein.

Applications

- Enzyme-linked Immunoabsorbent Assay
- Western Blot (Recombinant protein)
- Antibody Production
- Protein Array

Gene Info — RCVRN

Entrez GeneID [5957](#)

GeneBank Accession# [NM_002903.1](#)

Protein Accession# [NP_002894.1](#)

Gene Name RCVRN

Gene Alias RCV1

Gene Description recoverin

Omim ID [179618](#)

Gene Ontology [Hyperlink](#)

Gene Summary This gene encodes a member of the recoverin family of neuronal calcium sensors. The encoded protein contains three calcium-binding EF-hand domains and may prolong the termination of the phototransduction cascade in the retina by blocking the phosphorylation of photo-activated rhodopsin. Recoverin may be the antigen responsible for cancer-associated retinopathy. [provided by RefSeq]

Other Designations cancer associated retinopathy antigen