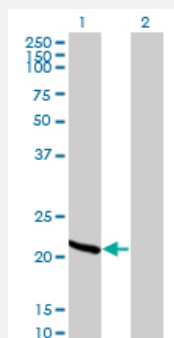


RCV1 monoclonal antibody (M42), clone 3H1

Catalog # H00005957-M42

Size 100 ug

Applications

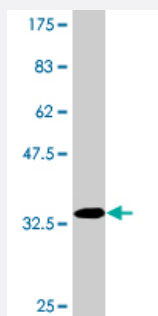


Western Blot (Transfected lysate)

Western Blot analysis of RCV1 expression in transfected 293T cell line by RCV1 monoclonal antibody (M42), clone 3H1.

Lane 1: RCV1 transfected lysate(23.13 KDa).

Lane 2: Non-transfected lysate.



Western Blot detection against Immunogen (35.64 KDa) .

Specification

Product Description	Mouse monoclonal antibody raised against a partial recombinant RCV1.
Immunogen	RCV1 (AAH01720.1, 91 a.a. ~ 181 a.a) partial recombinant protein with GST tag. MW of the GST tag alone is 26 KDa.
Sequence	HMTTAGKTNQKLEWAFSLYDVGNGTISKNEVLEIVMAIFKMITPEDVKLLPDDENTPEKRAEKIW KYFGKNDDDKLTEKEFIEGTLANKE
Host	Mouse
Reactivity	Human
Isotype	IgG2a Kappa

Quality Control Testing

Antibody Reactive Against Recombinant Protein.
Western Blot detection against Immunogen (35.64 KDa) .

Storage Buffer

In 1x PBS, pH 7.4

Storage Instruction

Store at -20°C or lower. Aliquot to avoid repeated freezing and thawing.

Applications

- Western Blot (Transfected lysate)

Western Blot analysis of RCV1 expression in transfected 293T cell line by RCV1 monoclonal antibody (M42), clone 3H1.

Lane 1: RCV1 transfected lysate(23.13 KDa).

Lane 2: Non-transfected lysate.

[Protocol Download](#)

- Western Blot (Recombinant protein)

[Protocol Download](#)

- ELISA

Gene Info — RCVRN

Entrez GeneID

[5957](#)

GeneBank Accession#

[BC001720](#)

Protein Accession#

[AAH01720.1](#)

Gene Name

RCVRN

Gene Alias

RCV1

Gene Description

recoverin

Omim ID

[179618](#)

Gene Ontology

[Hyperlink](#)

Gene Summary

This gene encodes a member of the recoverin family of neuronal calcium sensors. The encoded protein contains three calcium-binding EF-hand domains and may prolong the termination of the phototransduction cascade in the retina by blocking the phosphorylation of photo-activated rhodopsin. Recoverin may be the antigen responsible for cancer-associated retinopathy. [provided by RefSeq]

Other Designations

cancer associated retinopathy antigen