

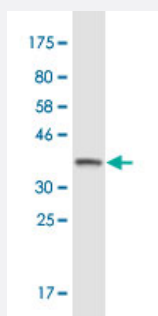
CX Grade

# RCVRN monoclonal antibody (M18C), clone 3D1

Catalog # H00005957-M18C

Size 200 uL

## Applications



Western Blot detection against Immunogen (36.3 KDa) .

## Specification

### Product Description

Mouse monoclonal antibody raised against a partial recombinant RCVRN.  
This product is belong to Cell Culture Grade Antibody (CX Grade).

### Immunogen

RCVRN (NP\_002894.1, 3 a.a. ~ 99 a.a) partial recombinant protein with GST tag. MW of the GST tag alone is 26 KDa.

### Sequence

NSKSGALSKEILEELQLNTKFSEEEELCSWYQSFLKDCPTGRITQQQFQSIYAKFFPDTPKAYAQH  
VFRSFDNSNLDGTLDFKEYVIALHMTTAGKTN

### Host

Mouse

### Reactivity

Human

### Preparation Method

Cell Culture Production

### Isotype

IgG2a Kappa

### Quality Control Testing

Antibody Reactive Against Recombinant Protein.  
Western Blot detection against Immunogen (36.3 KDa) .

### Storage Buffer

In condensed culture supernatant

### Storage Instruction

Store at -20°C or lower. Aliquot to avoid repeated freezing and thawing.

## Applications

- Western Blot (Recombinant protein)

[Protocol Download](#)

- ELISA

## Gene Info — RCVRN

Entrez GeneID	<a href="#">5957</a>
GeneBank Accession#	<a href="#">NM_002903.1</a>
Protein Accession#	<a href="#">NP_002894.1</a>
Gene Name	RCVRN
Gene Alias	RCV1
Gene Description	recoverin
Omim ID	<a href="#">179618</a>
Gene Ontology	<a href="#">Hyperlink</a>
Gene Summary	<p>This gene encodes a member of the recoverin family of neuronal calcium sensors. The encoded protein contains three calcium-binding EF-hand domains and may prolong the termination of the phototransduction cascade in the retina by blocking the phosphorylation of photo-activated rhodopsin. Recoverin may be the antigen responsible for cancer-associated retinopathy. [provided by RefSeq]</p>
Other Designations	cancer associated retinopathy antigen