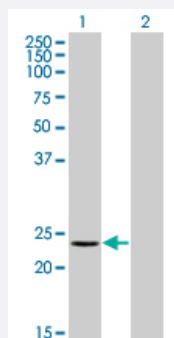


RCV1 monoclonal antibody (M11), clone 2B3

Catalog # H00005957-M11

Size 100 ug

Applications

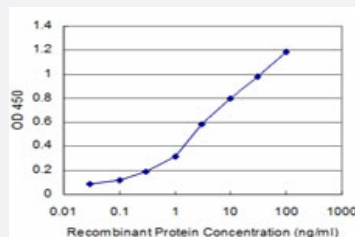


Western Blot (Transfected lysate)

Western Blot analysis of RCV1 expression in transfected 293T cell line by RCV1 monoclonal antibody (M11), clone 2B3.

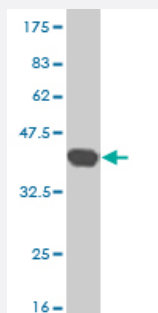
Lane 1: RCV1 transfected lysate(23.1 KDa).

Lane 2: Non-transfected lysate.



Sandwich ELISA (Recombinant protein)

Detection limit for recombinant GST tagged RCV1 is approximately 0.3ng/ml as a capture antibody.



Western Blot detection against Immunogen (36.63 KDa) .

Specification

Product Description

Mouse monoclonal antibody raised against a partial recombinant RCV1.

Immunogen	RCV1 (NP_002894.1, 101 a.a. ~ 199 a.a) partial recombinant protein with GST tag. MW of the GST tag alone is 26 KDa.
Sequence	KLEWAFSLYDVDGNGTISKNEVLEI/MAIFKMITPEDVKLLPDDENTPEKRAEKWKYFGKNDDDK LTEKEFIEGTLANKEILRLIQFEPQKVKEKMKN
Host	Mouse
Reactivity	Human
Isotype	IgG2a Kappa
Quality Control Testing	Antibody Reactive Against Recombinant Protein. Western Blot detection against Immunogen (36.63 KDa) .
Storage Buffer	In 1x PBS, pH 7.4
Storage Instruction	Store at -20°C or lower. Aliquot to avoid repeated freezing and thawing.

Applications

- Western Blot (Transfected lysate)

Western Blot analysis of RCV1 expression in transfected 293T cell line by RCV1 monoclonal antibody (M11), clone 2B3.

Lane 1: RCV1 transfected lysate(23.1 KDa).

Lane 2: Non-transfected lysate.

[Protocol Download](#)

- Western Blot (Recombinant protein)

[Protocol Download](#)

- Sandwich ELISA (Recombinant protein)

Detection limit for recombinant GST tagged RCV1 is approximately 0.3ng/ml as a capture antibody.

[Protocol Download](#)

- ELISA

Gene Info — RCVRN

Entrez GeneID [5957](#)

GeneBank Accession# [NM_002903.1](#)

Protein Accession#	NP_002894.1
Gene Name	RCVRN
Gene Alias	RCV1
Gene Description	recoverin
Omim ID	179618
Gene Ontology	Hyperlink
Gene Summary	<p>This gene encodes a member of the recoverin family of neuronal calcium sensors. The encoded protein contains three calcium-binding EF-hand domains and may prolong the termination of the phototransduction cascade in the retina by blocking the phosphorylation of photo-activated rhodopsin. Recoverin may be the antigen responsible for cancer-associated retinopathy. [provided by RefSeq]</p>
Other Designations	cancer associated retinopathy antigen