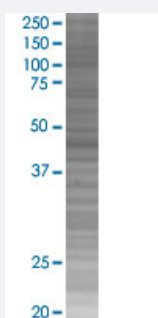


RCN2 293T Cell Transient Overexpression Lysate(Denatured)

Catalog # H00005955-T02

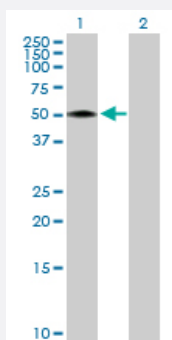
Size 100 uL

Applications



SDS-PAGE Gel

RCN2 transfected lysate.



Western Blot

Lane 1: RCN2 transfected lysate (36.90 KDa)

Lane 2: Non-transfected lysate.

Specification

Transfected Cell Line 293T

Plasmid pCMV-RCN2 full-length

Host Human

Theoretical MW (kDa) 36.9

Quality Control Testing Transient overexpression cell lysate was tested with Anti-RCN2 antibody ([H00005955-D01P](#)) by Western Blots.
 SDS-PAGE Gel
 RCN2 transfected lysate.
 Western Blot
 Lane 1: RCN2 transfected lysate (36.90 KDa)
 Lane 2: Non-transfected lysate.

Storage Buffer

1X Sample Buffer (50 mM Tris-HCl, 2% SDS, 10% glycerol, 300 mM 2-mercaptoethanol, 0.01% Bromophenol blue)

Storage Instruction

Store at -80°C. Aliquot to avoid repeated freezing and thawing.

Applications

- Western Blot

Gene Info — RCN2

Entrez GeneID[5955](#)**GeneBank Accession#**[NM_002902.1](#)**Protein Accession#**[NP_002893.1](#)**Gene Name**

RCN2

Gene Alias

E6BP, ERC-55, ERC55, TCBP49

Gene Description

reticulocalbin 2, EF-hand calcium binding domain

Omim ID[602584](#)**Gene Ontology**[Hyperlink](#)**Gene Summary**

The protein encoded by this gene is a calcium-binding protein located in the lumen of the ER. The protein contains six conserved regions with similarity to a high affinity Ca(+2)-binding motif, the EF-hand. This gene maps to the same region as type 4 Bardet-Biedl syndrome, suggesting a possible causative role for this gene in the disorder. [provided by RefSeq]

Other Designations

Reticulocalbin 2, EF-hand calcium binding domain (endoplasmic reticulum calcium-binding protein, 55kD)