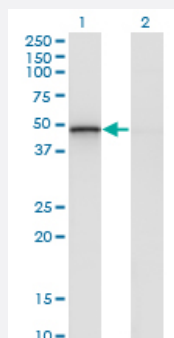


# RCN2 monoclonal antibody (M02), clone 1A9

Catalog # H00005955-M02

Size 100 ug

## Applications

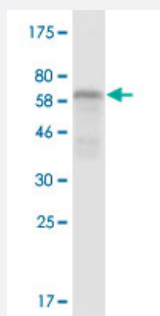


### Western Blot (Transfected lysate)

Western Blot analysis of RCN2 expression in transfected 293T cell line by RCN2 monoclonal antibody (M02), clone 1A9.

Lane 1: RCN2 transfected lysate(36.9 KDa).

Lane 2: Non-transfected lysate.



Western Blot detection against Immunogen (57.97 KDa) .

## Specification

### Product Description

Mouse monoclonal antibody raised against a full-length recombinant RCN2.

### Immunogen

RCN2 (AAH04892.1, 24 a.a. ~ 317 a.a) full-length recombinant protein with GST tag. MW of the GST tag alone is 26 KDa.

### Sequence

KAEELHYPLGERRSDYDREALLGVQEDVDEYVKLGHEEQQKRLQAIKKIDLDSDGFLTESELSS  
WQMSFKHYAMQEAKQQFVEYDKNSDDTVTWDEYNIQMYDRVIDFDENTALDDAEESFRKLHL  
KDKKRFEKANQDSGPGLSLEEFIAFEHPPEEVDYMTFVIQEALEEHDKNKGDFVSLSEEF LGDYR  
WDPTANEDPEWILVEKDRFVNDYDKDNDGR LDPQELLPWVVPNNQGIAQEEALHLIDEMDLNGD  
KKLSEEEILENPDLFLTSEATDYGRQLHDDYFYHDEL

### Host

Mouse

Reactivity	Human
Isotype	IgG1 Kappa
Quality Control Testing	Antibody Reactive Against Recombinant Protein. Western Blot detection against Immunogen (57.97 KDa) .
Storage Buffer	In 1x PBS, pH 7.4
Storage Instruction	Store at -20°C or lower. Aliquot to avoid repeated freezing and thawing.

## Applications

- Western Blot (Transfected lysate)

Western Blot analysis of RCN2 expression in transfected 293T cell line by RCN2 monoclonal antibody (M02), clone 1A9.

Lane 1: RCN2 transfected lysate(36.9 KDa).

Lane 2: Non-transfected lysate.

[Protocol Download](#)

- Western Blot (Recombinant protein)

[Protocol Download](#)

- ELISA

## Gene Info — RCN2

Entrez GeneID	<a href="#">5955</a>
GeneBank Accession#	<a href="#">BC004892</a>
Protein Accession#	<a href="#">AAH04892.1</a>
Gene Name	RCN2
Gene Alias	E6BP, ERC-55, ERC55, TCBP49
Gene Description	reticulocalbin 2, EF-hand calcium binding domain
Omim ID	<a href="#">602584</a>
Gene Ontology	<a href="#">Hyperlink</a>

**Gene Summary**

The protein encoded by this gene is a calcium-binding protein located in the lumen of the ER. The protein contains six conserved regions with similarity to a high affinity Ca(+2)-binding motif, the EF-hand. This gene maps to the same region as type 4 Bardet-Biedl syndrome, suggesting a possible causative role for this gene in the disorder. [provided by RefSeq]

**Other Designations**

Reticulocalbin 2, EF-hand calcium binding domain (endoplasmic reticulum calcium-binding protein, 55kD)