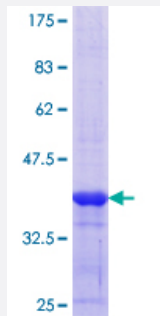


RBMY1A1 (Human) Recombinant Protein (Q01)

Catalog # H00005940-Q01

Size 25 ug, 10 ug

Applications



Specification

Product Description	Human RBMY1A1 partial ORF (NP_001007527.1, 257 a.a. - 356 a.a.) recombinant protein with GS T-tag at N-terminal.
Sequence	YGTSHGAPPARGPRMSYGGSTCHAYSNTRDRYGRSWESYSSCGDFHYCDREHVC RKDQRNPP SLGRVLPDPREACGSSSYVASMDGGESRSEKGDSSRY
Host	Wheat Germ (in vitro)
Theoretical MW (kDa)	36.74
Preparation Method	in vitro wheat germ expression system
Purification	Glutathione Sepharose 4 Fast Flow
Quality Control Testing	12.5% SDS-PAGE Stained with Coomassie Blue.
Storage Buffer	50 mM Tris-HCl, 10 mM reduced Glutathione, pH=8.0 in the elution buffer.
Storage Instruction	Store at -80°C. Aliquot to avoid repeated freezing and thawing.
Note	Best use within three months from the date of receipt of this protein.

Applications

- Enzyme-linked Immunoabsorbent Assay
- Western Blot (Recombinant protein)
- Antibody Production
- Protein Array

Gene Info — RBMY1A1

Entrez GeneID [5940](#)

GeneBank Accession# [NM_001007526](#)

Protein Accession# [NP_001007527.1](#)

Gene Name RBMY1A1

Gene Alias MGC181956, RBM1, RBM2, RBMY, YRRM1, YRRM2

Gene Description RNA binding motif protein, Y-linked, family 1, member A1

Omim ID [400006](#)

Gene Ontology [Hyperlink](#)

Gene Summary This gene encodes a protein containing an RNA-binding motif in the N-terminus and four SRGY (serine, arginine, glycine, tyrosine) boxes in the C-terminus. Multiple copies of this gene are found in the AZFb azoospermia factor region of chromosome Y and the encoded protein is thought to be involved in spermatogenesis. Most copies of this locus are pseudogenes, although six highly similar copies have full-length ORFs and are considered functional. Four functional copies of this gene are found within inverted repeat IR2; two functional copies of this gene are found in palindrome P3, along with two copies of PTPN13-like, Y-linked. [provided by RefSeq]

Other Designations OTTHUMP00000040529|RNA binding motif protein 1|RNA binding motif protein 2|RNA binding motif protein, Y chromosome, family 1, member A1