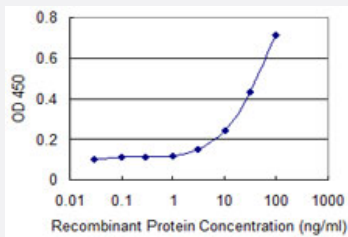


# RBMY1A1 monoclonal antibody (M01), clone 3G1

Catalog # H00005940-M01

Size 100 ug

## Applications



### Sandwich ELISA (Recombinant protein)

Detection limit for recombinant GST tagged RBMY1A1 is 1 ng/ml as a capture antibody.

## Specification

<b>Product Description</b>	Mouse monoclonal antibody raised against a partial recombinant RBMY1A1.
<b>Immunogen</b>	RBMY1A1 (NP_001007527.1, 257 a.a. ~ 356 a.a) partial recombinant protein with GST tag. MW of the GST tag alone is 26 KDa.
<b>Sequence</b>	YGTSHGAPPARGPRMSYGGSTCHAYSNTRDRYGRSWESYSSCGDFHYCDREHVCRKDQRNPP SLGRVLPDPREACGSSSYVASIVDGGESRSEKGDSSRY
<b>Host</b>	Mouse
<b>Reactivity</b>	Human
<b>Isotype</b>	IgG2a Kappa
<b>Quality Control Testing</b>	Antibody Reactive Against Recombinant Protein.
<b>Storage Buffer</b>	In 1x PBS, pH 7.4
<b>Storage Instruction</b>	Store at -20°C or lower. Aliquot to avoid repeated freezing and thawing.

## Applications

- Sandwich ELISA (Recombinant protein)

Detection limit for recombinant GST tagged RBMY1A1 is 1 ng/ml as a capture antibody.

[Protocol Download](#)

- ELISA

## Gene Info — RBMY1A1

Entrez GeneID [5940](#)

GeneBank Accession# [NM\\_001007526](#)

Protein Accession# [NP\\_001007527.1](#)

Gene Name RBMY1A1

Gene Alias MGC181956, RBM1, RBM2, RBMY, YRRM1, YRRM2

Gene Description RNA binding motif protein, Y-linked, family 1, member A1

Omim ID [400006](#)

Gene Ontology [Hyperlink](#)

**Gene Summary** This gene encodes a protein containing an RNA-binding motif in the N-terminus and four SRGY (serine, arginine, glycine, tyrosine) boxes in the C-terminus. Multiple copies of this gene are found in the AZFb azoospermia factor region of chromosome Y and the encoded protein is thought to be involved in spermatogenesis. Most copies of this locus are pseudogenes, although six highly similar copies have full-length ORFs and are considered functional. Four functional copies of this gene are found within inverted repeat IR2; two functional copies of this gene are found in palindrome P3, along with two copies of PTPN13-like, Y-linked. [provided by RefSeq]

**Other Designations** OTTHUMP00000040529|RNA binding motif protein 1|RNA binding motif protein 2|RNA binding motif protein, Y chromosome, family 1, member A1