

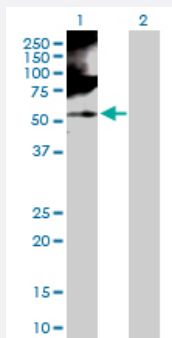
MaxPab®

## RBMS1 purified MaxPab rabbit polyclonal antibody (D01P)

Catalog # H00005937-D01P

Size 100 ug

### Applications



#### Western Blot (Transfected lysate)

Western Blot analysis of RBMS1 expression in transfected 293T cell line ([H00005937-T03](#)) by RBMS1 MaxPab polyclonal antibody.

Lane 1: RBMS1 transfected lysate(44.50 KDa).

Lane 2: Non-transfected lysate.

### Specification

#### Product Description

Rabbit polyclonal antibody raised against a full-length human RBMS1 protein.

#### Immunogen

RBMS1 (NP\_058520.1, 1 a.a. ~ 406 a.a) full-length human protein.

#### Sequence

MGKVKQQMYPQYATYYYPQYLQAKQSLVPAHPMAPPSPSTTSSNNNNSSSSSSNSGWDQLSKTN  
LYIRGLPPHTTDQDLVKLCQPYGKIVSTKAILDKTTNKCKGYGFVDFDSPAQAQKAVSALKASGVQ  
AQMAKQQEQDPTNLYISNPLSMDEQELENMLKPFQGVISTRILRDSSGTSRGVGFARMESTEKC  
EAVIGHFNGKFIKTPPGVSAPTEPLLCKFADGGQKKRQNPKNYPNGRPWHREGEVRLAGMTLTY  
DPTTAAIQNGFYSPYSIATNRMITQTSITPYASPVSAIQVQSPSWMQPQPYLQHPGAVLTSPMEH  
TMSLQPASMISPLAQQMSHLSLGSSTGYMPATSAMQGAYLPQYAHMQTTAVPVEEASGQQQVA  
VETSNDHSPYTFQPNK

#### Host

Rabbit

#### Reactivity

Human

#### Quality Control Testing

Antibody reactive against mammalian transfected lysate.

#### Storage Buffer

In 1x PBS, pH 7.4

#### Storage Instruction

Store at -20°C or lower. Aliquot to avoid repeated freezing and thawing.

## Applications

- Western Blot (Transfected lysate)

Western Blot analysis of RBMS1 expression in transfected 293T cell line ([H00005937-T03](#)) by RBMS1 MaxPab polyclonal antibody.

Lane 1: RBMS1 transfected lysate(44.50 KDa).

Lane 2: Non-transfected lysate.

[Protocol Download](#)

## Gene Info — RBMS1

Entrez GeneID [5937](#)

GeneBank Accession# [NM\\_016836](#)

Protein Accession# [NP\\_058520.1](#)

Gene Name RBMS1

Gene Alias MGC15146, MGC3331, MSSP, MSSP-1, MSSP-2, MSSP-3, SCR2, YC1

Gene Description RNA binding motif, single stranded interacting protein 1

Omim ID [602310](#)

Gene Ontology [Hyperlink](#)

**Gene Summary** This gene encodes a member of a small family of proteins which bind single stranded DNA/RNA. These proteins are characterized by the presence of two sets of ribonucleoprotein consensus sequence (RNP-CS) that contain conserved motifs, RNP1 and RNP2, originally described in RNA binding proteins, and required for DNA binding. These proteins have been implicated in such diverse functions as DNA replication, gene transcription, cell cycle progression and apoptosis. Several transcript variants, resulting from alternative splicing and encoding different isoforms, have been described. A pseudogene for this locus is found on chromosome 12. [provided by RefSeq]

**Other Designations** c-myc gene single strand binding protein 2|suppressor of cdc 2 (cdc13) with RNA binding motif 2

## Disease

- [Diabetes Mellitus](#)
- [Genetic Predisposition to Disease](#)

- [Insulin Resistance](#)
- [Tobacco Use Disorder](#)