

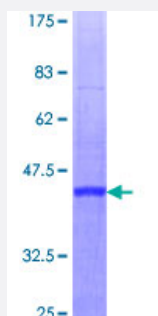
Full-Length

## RBBP6 (Human) Recombinant Protein (P01)

Catalog # H00005930-P01

Size 25 ug, 10 ug

### Applications



### Specification

<b>Product Description</b>	Human RBBP6 full-length ORF ( NP_116015.2, 1 a.a. - 118 a.a.) recombinant protein with GST-tag at N-terminal.
<b>Sequence</b>	MSCVHYKFSSKLNVDTVTFDGLHISLCDLKKQIMGREKLKAADCQLQITNAQTKEEYTDNALIPKN SSVIVRRIPIGGVKSTSKTYVISRTEPAMATTKAVCKNTISHFFYTLPL
<b>Host</b>	Wheat Germ (in vitro)
<b>Theoretical MW (kDa)</b>	39.6
<b>Preparation Method</b>	<a href="#">in vitro wheat germ expression system</a>
<b>Purification</b>	Glutathione Sepharose 4 Fast Flow
<b>Quality Control Testing</b>	12.5% SDS-PAGE Stained with Coomassie Blue.
<b>Storage Buffer</b>	50 mM Tris-HCl, 10 mM reduced Glutathione, pH=8.0 in the elution buffer.
<b>Storage Instruction</b>	Store at -80°C. Aliquot to avoid repeated freezing and thawing.
<b>Note</b>	Best use within three months from the date of receipt of this protein.

## Applications

- Enzyme-linked Immunoabsorbent Assay
- Western Blot (Recombinant protein)
- Antibody Production
- Protein Array

## Gene Info — RBBP6

Entrez GeneID	<a href="#">5930</a>
GeneBank Accession#	<a href="#">NM_032626.5</a>
Protein Accession#	<a href="#">NP_116015.2</a>
Gene Name	RBBP6
Gene Alias	DKFZp686P0638, DKFZp761B2423, MY038, P2P-R, PACT, RBQ-1, SNAMA
Gene Description	retinoblastoma binding protein 6
Omim ID	<a href="#">600938</a>
Gene Ontology	<a href="#">Hyperlink</a>
Gene Summary	The retinoblastoma tumor suppressor (pRB) protein binds with many other proteins. In various human cancers, pRB suppresses cellular proliferation and is inactivated. Cell cycle-dependent phosphorylation regulates the activity of pRB. This gene encodes a protein which binds to underphosphorylated but not phosphorylated pRB. Multiple alternatively spliced transcript variants that encode different isoforms have been found for this gene. [provided by RefSeq]
Other Designations	RB-binding Q-protein 1 proliferation potential-related protein retinoblastoma-binding protein 6 retinoblastoma-binding protein 6, isoform 3