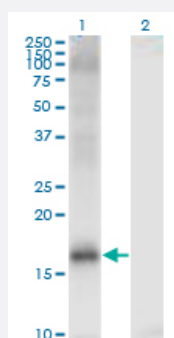


JARID1A monoclonal antibody (M03), clone 1H2

Catalog # H00005927-M03

Size 100 ug

Applications

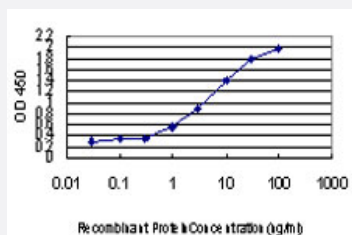


Western Blot (Transfected lysate)

Western Blot analysis of JARID1A expression in transfected 293T cell line by JARID1A monoclonal antibody (M03), clone 1H2.

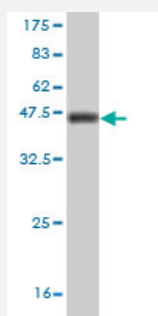
Lane 1: JARID1A transfected lysate (Predicted MW: 11.11 KDa).

Lane 2: Non-transfected lysate.



Sandwich ELISA (Recombinant protein)

Detection limit for recombinant GST tagged JARID1A is approximately 0.03ng/ml as a capture antibody.



Western Blot detection against Immunogen (36.74 KDa) .

Specification

Product Description

Mouse monoclonal antibody raised against a partial recombinant JARID1A.

Immunogen	JARID1A (NP_005047, 191 a.a. ~ 290 a.a) partial recombinant protein with GST tag. MW of the GST tag alone is 26 KDa.
Sequence	KVEPEVLSTDTQTSPEPGTRMNLPKRTRRVKTQSESGDVS RNTELKKLQIFGAGPKVVGLAMGT KDKEDVTRRRKVTNRSDAFNMQMRQRKGTLNVF
Host	Mouse
Reactivity	Human
Interspecies Antigen Sequence	Mouse (89); Rat (89)
Isotype	IgG2a Kappa
Quality Control Testing	Antibody Reactive Against Recombinant Protein. Western Blot detection against Immunogen (36.74 KDa) .
Storage Buffer	In 1x PBS, pH 7.4
Storage Instruction	Store at -20°C or lower. Aliquot to avoid repeated freezing and thawing.

Applications

- Western Blot (Transfected lysate)

Western Blot analysis of JARID1A expression in transfected 293T cell line by JARID1A monoclonal antibody (M03), clone 1H2.

Lane 1: JARID1A transfected lysate (Predicted MW: 11.11 KDa).

Lane 2: Non-transfected lysate.

[Protocol Download](#)

- Western Blot (Recombinant protein)

[Protocol Download](#)

- Sandwich ELISA (Recombinant protein)

Detection limit for recombinant GST tagged JARID1A is approximately 0.03ng/ml as a capture antibody.

[Protocol Download](#)

- ELISA

Gene Info — JARID1A

Entrez GeneID	5927
GeneBank Accession#	NM_005056
Protein Accession#	NP_005047
Gene Name	JARID1A
Gene Alias	KDM5A, RBBP2, RBP2
Gene Description	jumonji, AT rich interactive domain 1A
Omim ID	180202
Gene Ontology	Hyperlink
Gene Summary	<p>The protein encoded by this gene is a ubiquitously expressed nuclear protein. It binds directly, with several other proteins, to retinoblastoma protein which regulates cell proliferation. This protein also interacts with rhombotin-2 which functions distinctly in erythropoiesis and in T-cell leukemogenesis. Rhombotin-2 is thought to either directly affect the activity of the encoded protein or may indirectly modulate the functions of the retinoblastoma protein by binding to this protein. Alternatively spliced transcript variants encoding distinct isoforms have been found for this gene. [provided by RefSeq]</p>
Other Designations	Jumonji, AT rich interactive domain 1A (RBBP2-like) Jumonji, AT rich interactive domain 1A (RBP2-like) retinoblastoma binding protein 2 retinoblastoma-binding protein 2