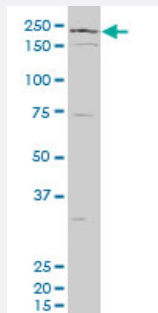


# JARID1A polyclonal antibody (A01)

Catalog # H00005927-A01

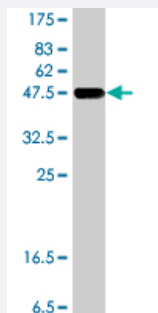
Size 50 uL

## Applications



### Western Blot (Cell lysate)

JARID1A polyclonal antibody (A01), Lot # 051019JC01 Western Blot analysis of JARID1A expression in MES-SA/Dx5 ( Cat # L021V1 ).



Western Blot detection against Immunogen (37.11 KDa) .

## Specification

Product Description	Mouse polyclonal antibody raised against a partial recombinant JARID1A.
Immunogen	JARID1A (NP_005047, 191 a.a. ~ 290 a.a) partial recombinant protein with GST tag.
Sequence	KVEPEVLSTDTQTSPEPGTRMNLPKRTRRVKTQSESGDVS RNTELKKLQIFGAGPKVVGLAMGT KDKEDVTRRRKVTNRSDAFNMQMRQRKGTLSVNF
Host	Mouse
Reactivity	Human
Interspecies Antigen Sequence	Mouse (89); Rat (89)

**Quality Control Testing**

Antibody Reactive Against Recombinant Protein.  
Western Blot detection against Immunogen (37.11 KDa) .

**Storage Buffer**

50 % glycerol

**Storage Instruction**

Store at -20°C or lower. Aliquot to avoid repeated freezing and thawing.

## Applications

- Western Blot (Cell lysate)

JARID1A polyclonal antibody (A01), Lot # 051019JC01 Western Blot analysis of JARID1A expression in MES-SA/Dx5 ( Cat # L021V1 ).

[Protocol Download](#)

- Western Blot (Recombinant protein)

[Protocol Download](#)

- ELISA

## Gene Info — JARID1A

**Entrez GeneID**

[5927](#)

**GeneBank Accession#**

[NM\\_005056](#)

**Protein Accession#**

[NP\\_005047](#)

**Gene Name**

JARID1A

**Gene Alias**

KDM5A, RBBP2, RBP2

**Gene Description**

jumonji, AT rich interactive domain 1A

**Omim ID**

[180202](#)

**Gene Ontology**

[Hyperlink](#)

**Gene Summary**

The protein encoded by this gene is a ubiquitously expressed nuclear protein. It binds directly, with several other proteins, to retinoblastoma protein which regulates cell proliferation. This protein also interacts with rhombotin-2 which functions distinctly in erythropoiesis and in T-cell leukemogenesis. Rhombotin-2 is thought to either directly affect the activity of the encoded protein or may indirectly modulate the functions of the retinoblastoma protein by binding to this protein. Alternatively spliced transcript variants encoding distinct isoforms have been found for this gene. [provided by RefSeq]

**Other Designations**

Jumonji, AT rich interactive domain 1A (RBBP2-like)|Jumonji, AT rich interactive domain 1A (RBBP2-like)|retinoblastoma binding protein 2|retinoblastoma-binding protein 2