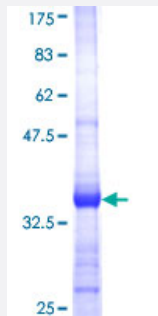


# RAPSN (Human) Recombinant Protein (Q01)

Catalog # H00005913-Q01

Size 25 ug, 10 ug

## Applications



## Specification

<b>Product Description</b>	Human RAPSN partial ORF ( NP_005046, 313 a.a. - 412 a.a.) recombinant protein with GST-tag at N-terminal.
<b>Sequence</b>	QDLAEEVGNKLSQLKLHCLSESIYRSKGLQRELRAHVVRFHCEVEETELYCGLCGESIGEKNSRL QALPCSHIFHLRCLQNNGTRSCPNCRRSSMKPGFV
<b>Host</b>	Wheat Germ (in vitro)
<b>Theoretical MW (kDa)</b>	36.74
<b>Interspecies Antigen Sequence</b>	Mouse (98); Rat (98)
<b>Preparation Method</b>	<a href="#">in vitro wheat germ expression system</a>
<b>Purification</b>	Glutathione Sepharose 4 Fast Flow
<b>Quality Control Testing</b>	12.5% SDS-PAGE Stained with Coomassie Blue.
<b>Storage Buffer</b>	50 mM Tris-HCl, 10 mM reduced Glutathione, pH=8.0 in the elution buffer.
<b>Storage Instruction</b>	Store at -80°C. Aliquot to avoid repeated freezing and thawing.
<b>Note</b>	Best use within three months from the date of receipt of this protein.

## Applications

- Enzyme-linked Immunoabsorbent Assay
- Western Blot (Recombinant protein)
- Antibody Production
- Protein Array

## Gene Info — RAPSN

Entrez GeneID [5913](#)

GeneBank Accession# [NM\\_005055](#)

Protein Accession# [NP\\_005046](#)

Gene Name RAPSN

Gene Alias CMS1D, CMS1E, MGC3597, RNF205

Gene Description receptor-associated protein of the synapse

Omim ID [601592](#) [608931](#)

Gene Ontology [Hyperlink](#)

**Gene Summary** This protein belongs to a family of proteins that are receptor associated proteins of the synapse. It contains a conserved cAMP-dependent protein kinase phosphorylation site. It is believed to play some role in anchoring or stabilizing the nicotinic acetylcholine receptor at synaptic sites. It may link the receptor to the underlying postsynaptic cytoskeleton, possibly by direct association with actin or spectrin. Two splice variants have been identified for this gene. [provided by RefSeq]

**Other Designations** 43 kD receptor-associated protein of the synapse|43 kda postsynaptic protein|acetylcholine receptor-associated 43 kda protein|rapsyn|receptor-associated protein of the synapse, 43kD