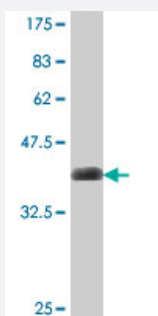


# RAPSN polyclonal antibody (A01)

Catalog # H00005913-A01

Size 50 uL

## Applications



Western Blot detection against Immunogen (37.11 kDa) .

## Specification

<b>Product Description</b>	Mouse polyclonal antibody raised against a partial recombinant RAPSN.
<b>Immunogen</b>	RAPSN (NP_005046, 313 a.a. ~ 412 a.a) partial recombinant protein with GST tag.
<b>Sequence</b>	QDLAEEVGNKLSQLKLHCLSESIYRSKGLQRELRAHVVRFHCEVEETELYCGLCGESIGEKNSRL QALPCSHIFHLRCLQNGTRSCPNCRRSSMKPGFV
<b>Host</b>	Mouse
<b>Reactivity</b>	Human
<b>Interspecies Antigen Sequence</b>	Mouse (98); Rat (98)
<b>Quality Control Testing</b>	Antibody Reactive Against Recombinant Protein. Western Blot detection against Immunogen (37.11 kDa) .
<b>Storage Buffer</b>	50 % glycerol
<b>Storage Instruction</b>	Store at -20°C or lower. Aliquot to avoid repeated freezing and thawing.

## Applications

- Western Blot (Recombinant protein)

[Protocol Download](#)

- ELISA

## Gene Info — RAPSN

Entrez GeneID [5913](#)

GeneBank Accession# [NM\\_005055](#)

Protein Accession# [NP\\_005046](#)

Gene Name RAPSN

Gene Alias CMS1D, CMS1E, MGC3597, RNF205

Gene Description receptor-associated protein of the synapse

Omim ID [601592 608931](#)

Gene Ontology [Hyperlink](#)

**Gene Summary** This protein belongs to a family of proteins that are receptor associated proteins of the synapse. It contains a conserved cAMP-dependent protein kinase phosphorylation site. It is believed to play some role in anchoring or stabilizing the nicotinic acetylcholine receptor at synaptic sites. It may link the receptor to the underlying postsynaptic cytoskeleton, possibly by direct association with actin or spectrin. Two splice variants have been identified for this gene. [provided by RefSeq]

**Other Designations** 43 kD receptor-associated protein of the synapse|43 kda postsynaptic protein|acetylcholine receptor-associated 43 kda protein|rapsyn|receptor-associated protein of the synapse, 43kD