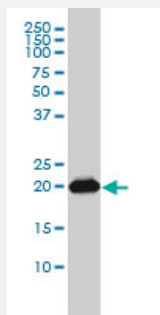


# RAP2B monoclonal antibody (M01), clone 4F12-3C6

Catalog # H00005912-M01

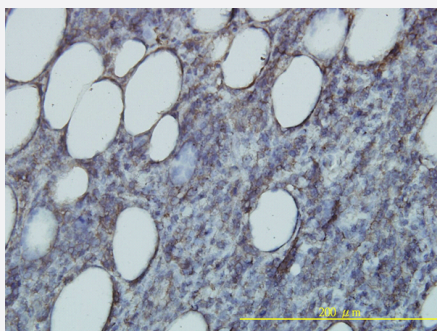
Size 100 ug

## Applications



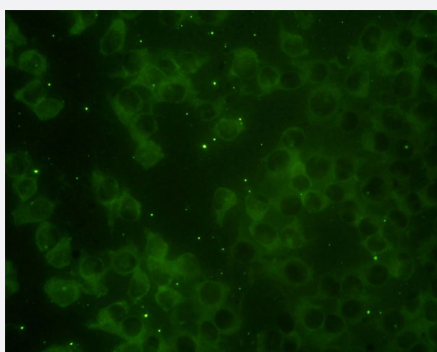
### Western Blot (Cell lysate)

RAP2B monoclonal antibody (M01), clone 4F12-3C6 Western Blot analysis of RAP2B expression in A-431 ( Cat # L015V1 ).



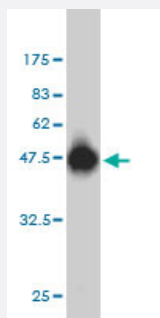
### Immunohistochemistry (Formalin/PFA-fixed paraffin-embedded sections)

Immunoperoxidase of monoclonal antibody to RAP2B on formalin-fixed paraffin-embedded human malignant lymphoma, diffuse large B tissue. [antibody concentration 1 ug/ml]



### Immunofluorescence

Immunofluorescence of monoclonal antibody to RAP2B on HeLa cell. [antibody concentration 10 ug/ml]



Western Blot detection against Immunogen (45.87 KDa) .

## Specification

<b>Product Description</b>	Mouse monoclonal antibody raised against a full length recombinant RAP2B.
<b>Immunogen</b>	RAP2B (AAH12362, 1 a.a. ~ 183 a.a) full-length recombinant protein with GST tag. MW of the GST tag alone is 26 KDa.
<b>Sequence</b>	MREYKVVVLGSGGVGKSALTVQFVTGSFIEKYDPTIEDFYRKEIEVDSSPSVLEILDTAGTEQFAS MRDLYIKNGQGFIIVYSLVNQQSFQDIKPMRDQIIRVKRYERVPMLVGKNKVDLEGEREVSYGEGKA LAEWSCPFMETSAKNKASVDELFAEIVRQMNYAAQPNGDEGCCSACVIL
<b>Host</b>	Mouse
<b>Reactivity</b>	Human
<b>Interspecies Antigen Sequence</b>	Mouse (100); Rat (100)
<b>Isotype</b>	IgG2b kappa
<b>Quality Control Testing</b>	Antibody Reactive Against Recombinant Protein. Western Blot detection against Immunogen (45.87 KDa) .
<b>Storage Buffer</b>	In 1x PBS, pH 7.4
<b>Storage Instruction</b>	Store at -20°C or lower. Aliquot to avoid repeated freezing and thawing.

## Applications

- Western Blot (Cell lysate)

RAP2B monoclonal antibody (M01), clone 4F12-3C6 Western Blot analysis of RAP2B expression in A-431 ( Cat # L015V1 ).

[Protocol Download](#)

- Western Blot (Recombinant protein)

[Protocol Download](#)

- Immunohistochemistry (Formalin/PFA-fixed paraffin-embedded sections)

Immunoperoxidase of monoclonal antibody to RAP2B on formalin-fixed paraffin-embedded human malignant lymphoma, diffuse large B tissue. [antibody concentration 1 ug/ml]

[Protocol Download](#)

- ELISA

- Immunofluorescence

Immunofluorescence of monoclonal antibody to RAP2B on HeLa cell. [antibody concentration 10 ug/ml]

## Gene Info — RAP2B

Entrez GeneID [5912](#)

GeneBank Accession# [BC012362](#)

Protein Accession# [AAH12362](#)

Gene Name RAP2B

Gene Alias MGC20484

Gene Description RAP2B, member of RAS oncogene family

Omim ID [179541](#)

Gene Ontology [Hyperlink](#)

**Gene Summary** This intronless gene belongs to a family of RAS-related genes. The proteins encoded by these genes share approximately 50% amino acid identity with the classical RAS proteins and have numerous structural features in common. The most striking difference between the RAP and RAS proteins resides in their 61st amino acid: glutamine in RAS is replaced by threonine in RAP proteins. Evidence suggests that this protein may be polyisoprenylated and palmitoylated. [provided by RefSeq]

**Other Designations** Ras family small GTP binding protein RAP2B|Ras-related protein RAP-2B|small GTP binding protein

## Disease

- [Cardiovascular Diseases](#)
- [Diabetes Mellitus](#)
- [Edema](#)