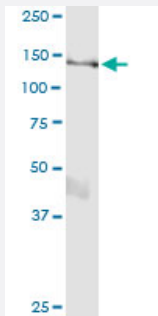


RALGDS (Human) IP-WB Antibody Pair

Catalog # H00005900-PW1

Size 1 Set

Applications



Immunoprecipitation of RALGDS transfected lysate using rabbit polyclonal anti-RALGDS and Protein A Magnetic Bead ([U0007](#)), and immunoblotted with mouse purified polyclonal anti-RALGDS.

Specification

Product Description	This IP-WB antibody pair set comes with one antibody for immunoprecipitation and another to detect the precipitated protein in western blot.
Reactivity	Human
Quality Control Testing	Immunoprecipitation-Western Blot (IP-WB) Immunoprecipitation of RALGDS transfected lysate using rabbit polyclonal anti-RALGDS and Protein A Magnetic Bead (U0007), and immunoblotted with mouse purified polyclonal anti-RALGDS.
Supplied Product	Antibody pair set content: 1. Antibody pair for IP: rabbit polyclonal anti-RALGDS (300 ul) 2. Antibody pair for WB: mouse purified polyclonal anti-RALGDS (50 ug)
Storage Instruction	Store reagents of the antibody pair set at -20°C or lower. Please aliquot to avoid repeated freeze thaw cycle. Reagents should be returned to -20°C storage immediately after use.

Applications

- Immunoprecipitation-Western Blot

[Protocol Download](#)

Gene Info — RALGDS

Entrez GeneID	5900
Gene Name	RALGDS
Gene Alias	FLJ20922, RGF, RaGEF
Gene Description	ral guanine nucleotide dissociation stimulator
Omim ID	601619
Gene Ontology	Hyperlink
Other Designations	OTTHUMP00000022458 OTTHUMP00000022460

Pathway

- [Colorectal cancer](#)
- [Pancreatic cancer](#)
- [Pathways in cancer](#)