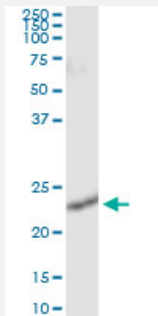


# RALB (Human) IP-WB Antibody Pair

Catalog # H00005899-PW1

Size 1 Set

## Applications



Immunoprecipitation of RALB transfected lysate using mouse monoclonal anti-RALB and Protein A Magnetic Bead ([U0007](#)), and immunoblotted with rabbit polyclonal anti-RALB.

## Specification

<b>Product Description</b>	This IP-WB antibody pair set comes with one antibody for immunoprecipitation and another to detect the precipitated protein in western blot.
<b>Reactivity</b>	Human
<b>Interspecies Antigen Sequence</b>	Mouse (95%); Rat (95%)
<b>Quality Control Testing</b>	Immunoprecipitation-Western Blot (IP-WB) Immunoprecipitation of RALB transfected lysate using mouse monoclonal anti-RALB and Protein A Magnetic Bead ( <a href="#">U0007</a> ), and immunoblotted with rabbit polyclonal anti-RALB.
<b>Supplied Product</b>	Antibody pair set content: 1. Antibody pair for IP: mouse monoclonal anti-RALB (300 ug) 2. Antibody pair for WB: rabbit polyclonal anti-RALB (50 ul)
<b>Storage Instruction</b>	Store reagents of the antibody pair set at -20°C or lower. Please aliquot to avoid repeated freeze thaw cycle. Reagents should be returned to -20°C storage immediately after use.

## Applications

- Immunoprecipitation-Western Blot

[Protocol Download](#)

## Gene Info — RALB

Entrez GeneID	<a href="#">5899</a>
Gene Name	RALB
Gene Alias	-
Gene Description	v-ral simian leukemia viral oncogene homolog B (ras related; GTP binding protein)
Omim ID	<a href="#">179551</a>
Gene Ontology	<a href="#">Hyperlink</a>
Gene Summary	This gene encodes a GTP-binding protein that belongs to the small GTPase superfamily and Ras family of proteins. GTP-binding proteins mediate the transmembrane signaling initiated by the occupancy of certain cell surface receptors. [provided by RefSeq]
Other Designations	GTP binding protein RAS-like protein B v-ral simian leukemia viral oncogene homolog B

## Pathway

- [Pancreatic cancer](#)
- [Pathways in cancer](#)

## Disease

- [Tobacco Use Disorder](#)