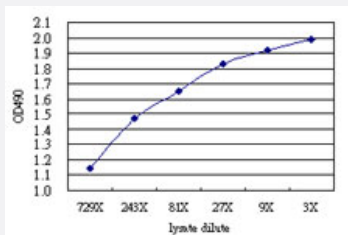


RALB (Human) Matched Antibody Pair

Catalog # H00005899-AP61

Size 1 Set

Applications



Sandwich ELISA detection sensitivity ranging from approximately 729x to 3x dilution of the RALB 293T overexpression lysate (non-denatured).

Specification

Product Description	This antibody pair set comes with a matched antibody pair to detect and quantify the protein level of human RALB.
Reactivity	Human
Interspecies Antigen Sequence	Mouse (95%); Rat (95%)
Quality Control Testing	Standard curve using RALB 293T overexpression lysate (non-denatured) as an analyte. Sandwich ELISA detection sensitivity ranging from approximately 729x to 3x dilution of the RALB 293T overexpression lysate (non-denatured).
Supplied Product	Antibody pair set content: 1. Capture antibody: mouse monoclonal anti-RALB (100 ug) 2. Detection antibody: rabbit MaxPab® affinity purified polyclonal anti-RALB (50 ug) *Reagents are sufficient for at least 3-5 x 96 well plates using recommended protocols.
Storage Instruction	Store reagents of the antibody pair set at -20°C or lower. Please aliquot to avoid repeated freeze thaw cycle. Reagents should be returned to -20°C storage immediately after use.

Applications

- [ELISA Pair \(Transfected lysate\)](#)

[Protocol Download](#)

Gene Info — RALB

Entrez GeneID	5899
Gene Name	RALB
Gene Alias	-
Gene Description	v-ral simian leukemia viral oncogene homolog B (ras related; GTP binding protein)
Omim ID	179551
Gene Ontology	Hyperlink
Gene Summary	This gene encodes a GTP-binding protein that belongs to the small GTPase superfamily and Ras family of proteins. GTP-binding proteins mediate the transmembrane signaling initiated by the occupancy of certain cell surface receptors. [provided by RefSeq]
Other Designations	GTP binding protein RAS-like protein B v-ral simian leukemia viral oncogene homolog B

Pathway

- [Pancreatic cancer](#)
- [Pathways in cancer](#)

Disease

- [Tobacco Use Disorder](#)