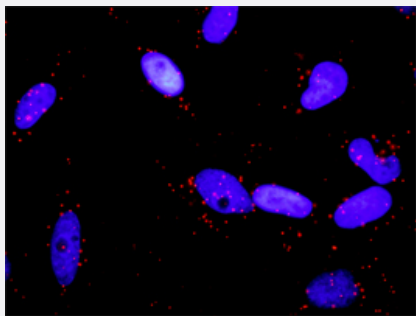


RALA monoclonal antibody (M01), clone 3E6

Catalog # H00005898-M01

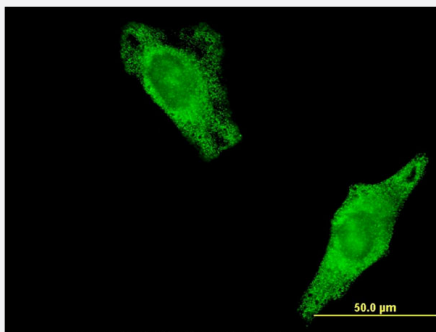
Size 100 ug

Applications



In situ Proximity Ligation Assay (Cell)

Proximity Ligation Analysis of protein-protein interactions between RALBP1 and RALA. HeLa cells were stained with anti-RALBP1 rabbit purified polyclonal 1:1200 and anti-RALA mouse monoclonal antibody 1:50. Each red dot represents the detection of protein-protein interaction complex, and nuclei were counterstained with DAPI (blue).



Immunofluorescence

Immunofluorescence of monoclonal antibody to RALA on HeLa cell . [antibody concentration 10 ug/ml]

Specification

Product Description	Mouse monoclonal antibody raised against a partial synthetic RALA.
Immunogen	Synthetic phosphopeptide (conjugated with KLH) corresponding to residues surrounding S194 of human RALA. The mark "*" on the immunogen sequence is the site of phosphorylation.
Sequence	NGKKKRKSLAKRI
Host	Mouse
Reactivity	Human
Interspecies Antigen Sequence	Mouse (100); Rat (100)

Isotype	IgG2a Kappa
Quality Control Testing	Antibody Reactive Against Recombinant Protein.
Storage Buffer	In 1x PBS, pH 7.4
Storage Instruction	Store at -20°C or lower. Aliquot to avoid repeated freezing and thawing.

Applications

- ELISA

- *In situ* Proximity Ligation Assay (Cell)

Proximity Ligation Analysis of protein-protein interactions between RALBP1 and RALA. HeLa cells were stained with anti-RALBP1 rabbit purified polyclonal 1:1200 and anti-RALA mouse monoclonal antibody 1:50. Each red dot represents the detection of protein-protein interaction complex, and nuclei were counterstained with DAPI (blue).

- Immunofluorescence

Immunofluorescence of monoclonal antibody to RALA on HeLa cell . [antibody concentration 10 ug/ml]

Gene Info — RALA

Entrez GeneID	5898
GeneBank Accession#	NM_005402
Protein Accession#	NP_005393
Gene Name	RALA
Gene Alias	MGC48949, RAL
Gene Description	v-ral simian leukemia viral oncogene homolog A (ras related)
Omim ID	179550
Gene Ontology	Hyperlink
Gene Summary	The product of this gene belongs to the small GTPase superfamily, Ras family of proteins. GTP-binding proteins mediate the transmembrane signaling initiated by the occupancy of certain cell surface receptors. This gene encodes a low molecular mass ras-like GTP-binding protein that shares about 50% similarity with other ras proteins. [provided by RefSeq]
Other Designations	RAS-like protein A Ras family small GTP binding protein RALA Ras-related protein Ral-A ras related v-ral simian leukemia viral oncogene homolog A

Pathway

- [Pancreatic cancer](#)
- [Pathways in cancer](#)

Disease

- [Tobacco Use Disorder](#)