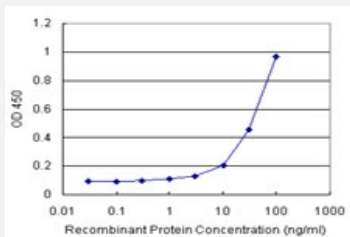


# RAD51L3 (Human) Matched Antibody Pair

Catalog # H00005892-AP21      Size 1 Set

## Applications



Sandwich ELISA detection sensitivity ranging from 3 ng/ml to 100 ng/ml.

## Specification

<b>Product Description</b>	This antibody pair set comes with a matched antibody pair to detect and quantify the protein level of human RAD51L3.
<b>Reactivity</b>	Human
<b>Quality Control Testing</b>	Standard curve using recombinant protein ( H00005892-P01 ) as an analyte. Sandwich ELISA detection sensitivity ranging from 3 ng/ml to 100 ng/ml.
<b>Supplied Product</b>	Antibody pair set content: 1. Capture antibody: rabbit MaxPab® affinity purified polyclonal anti-RAD51L3 (100 ug) 2. Detection antibody: mouse purified polyclonal anti-RAD51L3 (20 ug) *Reagents are sufficient for at least 1-2 x 96 well plates using recommended protocols.
<b>Storage Instruction</b>	Store reagents of the antibody pair set at -20°C or lower. Please aliquot to avoid repeated freeze thaw cycle. Reagents should be returned to -20°C storage immediately after use.

## Applications

- ELISA Pair (Recombinant protein)

[Protocol Download](#)

## Gene Info — RAD51L3

Entrez GeneID [5892](#)

Gene Name RAD51L3

Gene Alias HsTRAD, R51H3, RAD51D, Trad

Gene Description RAD51-like 3 (S. cerevisiae)

Omim ID [602954](#)

Gene Ontology [Hyperlink](#)

**Gene Summary**

The protein encoded by this gene is a member of the RAD51 protein family. RAD51 family members are highly similar to bacterial RecA and Saccharomyces cerevisiae Rad51, which are known to be involved in the homologous recombination and repair of DNA. This protein forms a complex with several other members of the RAD51 family, including RAD51L1, RAD51L2, and XRCC2. The protein complex formed with this protein has been shown to catalyze homologous pairing between single- and double-stranded DNA, and is thought to play a role in the early stage of recombinational repair of DNA. Several alternatively spliced transcript variants of this gene have been described, but the biological validity of some of them has not been determined. [provided by RefSeq]

**Other Designations** DNA repair protein RAD51 homolog 4|RAD51-like 3|recombination repair protein

## Pathway

- [Homologous recombination](#)

## Disease

- [Adenocarcinoma](#)
- [Breast cancer](#)
- [Breast Neoplasms](#)
- [Genetic Predisposition to Disease](#)
- [Head and Neck Neoplasms](#)
- [Multiple Sclerosis](#)
- [Neoplasm Recurrence](#)
- [Neoplasms](#)

- [Ovarian cancer](#)
- [Ovarian Neoplasms](#)
- [Pancreatic Neoplasms](#)
- [Urinary Bladder Neoplasms](#)