

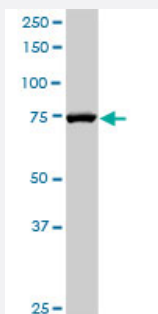
MaxPab®

RAD17 purified MaxPab rabbit polyclonal antibody (D01P)

Catalog # H00005884-D01P

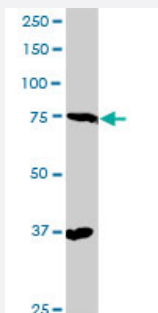
Size 100 ug

Applications



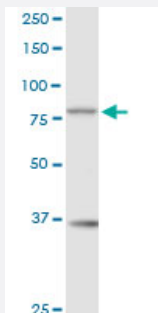
Western Blot (Tissue lysate)

RAD17 MaxPab rabbit polyclonal antibody. Western Blot analysis of RAD17 expression in mouse lung.



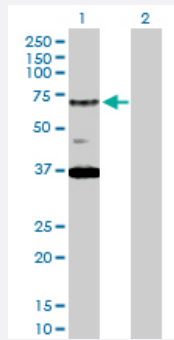
Western Blot (Tissue lysate)

RAD17 MaxPab rabbit polyclonal antibody. Western Blot analysis of RAD17 expression in human kidney.



Western Blot (Cell lysate)

RAD17 MaxPab rabbit polyclonal antibody. Western Blot analysis of RAD17 expression in Hela S3 NE.



Western Blot (Transfected lysate)

Western Blot analysis of RAD17 expression in transfected 293T cell line ([H00005884-T02](#)) by RAD17 MaxPab polyclonal antibody.

Lane 1: RAD17 transfected lysate(66.20 KDa).

Lane 2: Non-transfected lysate.

Specification

Product Description	Rabbit polyclonal antibody raised against a full-length human RAD17 protein.
Immunogen	RAD17 (NP_579919.1, 1 a.a. ~ 584 a.a) full-length human protein.
Sequence	MNQHELAVHKKKIEEVETWLKAQVLERQPKQGGSILLITGPPGCGKTTTLKILSKEHGIQVQEWINP VLPDFQKDDFKGMFNTESSEFHMFPYQSQIAVFKEFLLRATKYNKLQMLGDDLRTDKKILVEDLPN QFYRDSHTLHEVLRKYVRIGRCPLIFIISDSLSGDNNQRLLFPKEIQEECSISNISFNPVAPTIMMKFL NRVTIEANKNGGKITVPDKTSLELLCQGCSDIRSAINSLQFSSSKGENNLRPRKKGMSLKSDAVL SKSKRRKKPDRVFENQEVQAIGGKDVSLFLFRALGKILYCKRASLTELDSPRLPSHLSEYERDTLL VEPEEVVEMSHMPGDLFNLYLHQNYIDFFMEIDIVRASEFLSFADILSGDWNTRSLREYSTSIAT RGVMHSNKARGYAHCCGGGSSFRPLHKPQWFLINKKYRENCLAALKALFPDFCLPALCLQTQLLP YLALLTIPMRNQAQISFIQDIGRLPLKRHFGRKMEALTDREHGMIDPDGDEAQLNGGHSAAEESL GEPTQATVPETWSLPLSQNSASELPASQPQPFSAQGDMEENIIEDYESDGT
Host	Rabbit
Reactivity	Human, Mouse
Quality Control Testing	Antibody reactive against mammalian transfected lysate.
Storage Buffer	In 1x PBS, pH 7.4
Storage Instruction	Store at -20°C or lower. Aliquot to avoid repeated freezing and thawing.

Applications

- Western Blot (Tissue lysate)

RAD17 MaxPab rabbit polyclonal antibody. Western Blot analysis of RAD17 expression in mouse lung.

[Protocol Download](#)

- Western Blot (Tissue lysate)

RAD17 MaxPab rabbit polyclonal antibody. Western Blot analysis of RAD17 expression in human kidney.

[Protocol Download](#)

- Western Blot (Cell lysate)

RAD17 MaxPab rabbit polyclonal antibody. Western Blot analysis of RAD17 expression in Hela S3 NE.

[Protocol Download](#)

- Western Blot (Transfected lysate)

Western Blot analysis of RAD17 expression in transfected 293T cell line ([H00005884-T02](#)) by RAD17 MaxPab polyclonal antibody.

Lane 1: RAD17 transfected lysate(66.20 KDa).

Lane 2: Non-transfected lysate.

[Protocol Download](#)

Gene Info — RAD17

Entrez GeneID	5884
---------------	----------------------

GeneBank Accession#	NM_133341
---------------------	---------------------------

Protein Accession#	NP_579919.1
--------------------	-----------------------------

Gene Name	RAD17
-----------	-------

Gene Alias	CCYC, FLJ41520, HRAD17, R24L, RAD17SP, RAD24
------------	--

Gene Description	RAD17 homolog (S. pombe)
------------------	--------------------------

Omim ID	603139
---------	------------------------

Gene Ontology	Hyperlink
---------------	---------------------------

Gene Summary

The protein encoded by this gene is highly similar to the gene product of *Schizosaccharomyces pombe rad17*, a cell cycle checkpoint gene required for cell cycle arrest and DNA damage repair in response to DNA damage. This protein shares strong similarity with DNA replication factor C (RFC), and can form a complex with RFCs. This protein binds to chromatin prior to DNA damage and is phosphorylated by the checkpoint kinase ATR following damage. This protein recruits the RAD1-RAD9-HUS1 checkpoint protein complex onto chromatin after DNA damage, which may be required for its phosphorylation. The phosphorylation of this protein is required for the DNA-damage-induced cell cycle G2 arrest, and is thought to be a critical early event during checkpoint signaling in DNA-damaged cells. Eight alternatively spliced transcript variants of this gene, which encode four distinct proteins, have been reported. Two pseudogenes, located on chromosomes 7 and 13, have been identified. [provided by RefSeq]

Other Designations

OTTHUMP00000125189|OTTHUMP00000125190|OTTHUMP00000125192|OTTHUMP00000125193|OTTHUMP00000125194|RAD1 homolog|RAD17 homolog|RF-C activator 1 homolog|Rad17-like protein|cell cycle checkpoint protein (RAD17)

Disease

- [Breast cancer](#)
- [Breast Neoplasms](#)
- [Genetic Predisposition to Disease](#)