

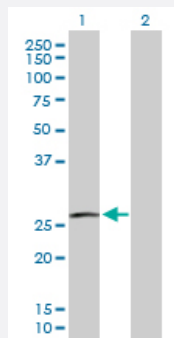
MaxPab®

## RAC3 purified MaxPab rabbit polyclonal antibody (D01P)

Catalog # H00005881-D01P

Size 100 ug

### Applications



#### Western Blot (Transfected lysate)

Western Blot analysis of RAC3 expression in transfected 293T cell line ([H00005881-T03](#)) by RAC3 MaxPab polyclonal antibody.

Lane 1: RAC3 transfected lysate(21.40 KDa).

Lane 2: Non-transfected lysate.

### Specification

Product Description	Rabbit polyclonal antibody raised against a full-length human RAC3 protein.
Immunogen	RAC3 (NP_005043.1, 1 a.a. ~ 192 a.a) full-length human protein.
Sequence	MQAIKCVVVG DGAVGKTCLLSYTTNAFPGEYPTVFDNYSANVMVDGKPVNLGLWDTAGQEDYD RLRPLSYPQTDVFLICFSLVSPASFENVRAKWYPEVRHHCPHTPILLVGTKLDLRDDKDTIERLRD KKLAPITYPQGLAMAREIGSVKYLECSALTQRGLKTVFDEAIRAVLCPPPVKKPGKKCTVF
Host	Rabbit
Reactivity	Human
Quality Control Testing	Antibody reactive against mammalian transfected lysate.
Storage Buffer	In 1x PBS, pH 7.4
Storage Instruction	Store at -20°C or lower. Aliquot to avoid repeated freezing and thawing.

### Applications

- Western Blot (Transfected lysate)

Western Blot analysis of RAC3 expression in transfected 293T cell line ([H00005881-T03](#)) by RAC3 MaxPab polyclonal antibody.

Lane 1: RAC3 transfected lysate(21.40 KDa).

Lane 2: Non-transfected lysate.

[Protocol Download](#)

## Gene Info — RAC3

Entrez GeneID [5881](#)

GeneBank Accession# [NM\\_005052](#)

Protein Accession# [NP\\_005043.1](#)

Gene Name RAC3

Gene Alias -

Gene Description ras-related C3 botulinum toxin substrate 3 (rho family, small GTP binding protein Rac3)

Omim ID [602050](#)

Gene Ontology [Hyperlink](#)

**Gene Summary** The protein encoded by this gene is a GTPase which belongs to the RAS superfamily of small GTP-binding proteins. Members of this superfamily appear to regulate a diverse array of cellular events, including the control of cell growth, cytoskeletal reorganization, and the activation of protein kinases. [provided by RefSeq]

**Other Designations** rho family, small GTP binding protein Rac3

## Pathway

- [Adherens junction](#)
- [Axon guidance](#)
- [B cell receptor signaling pathway](#)
- [Colorectal cancer](#)

- [Fc epsilon RI signaling pathway](#)
- [Focal adhesion](#)
- [MAPK signaling pathway](#)
- [Natural killer cell mediated cytotoxicity](#)
- [Pancreatic cancer](#)
- [Pathways in cancer](#)
- [Regulation of actin cytoskeleton](#)
- [VEGF signaling pathway](#)
- [Wnt signaling pathway](#)