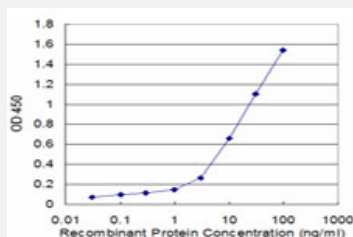


# RABIF monoclonal antibody (M03), clone 3A6

Catalog # H00005877-M03

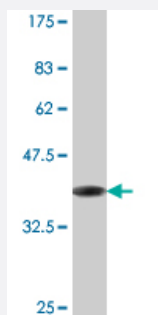
Size 100 ug

## Applications



### Sandwich ELISA (Recombinant protein)

Detection limit for recombinant GST tagged RABIF is approximately 0.1ng/ml as a capture antibody.



Western Blot detection against Immunogen (39.27 KDa) .

## Specification

### Product Description

Mouse monoclonal antibody raised against a full-length recombinant RABIF.

### Immunogen

RABIF (AAH18488, 1 a.a. ~ 123 a.a) full-length recombinant protein with GST tag. MW of the GST tag alone is 26 KDa.

### Sequence

MEPAEQPSELVSAEGRNRKAVLCQRCGSRVLQPGTALFSRRQLFLPSMRKKPALSDGSPDGDLLQEHWLVEDMFI FENVGFTKDVGNIKFLVCADCEIGPIGWHLDDKNSFYVALERSHE

### Host

Mouse

### Reactivity

Human

Interspecies Antigen Sequence	Mouse (93); Rat (92)
Isotype	IgG1 Kappa
Quality Control Testing	Antibody Reactive Against Recombinant Protein. Western Blot detection against Immunogen (39.27 KDa) .
Storage Buffer	In 1x PBS, pH 7.4
Storage Instruction	Store at -20°C or lower. Aliquot to avoid repeated freezing and thawing.

## Applications

- Western Blot (Recombinant protein)

[Protocol Download](#)

- Sandwich ELISA (Recombinant protein)

Detection limit for recombinant GST tagged RABIF is approximately 0.1ng/ml as a capture antibody.

[Protocol Download](#)

- ELISA

## Gene Info — RABIF

Entrez GeneID	<a href="#">5877</a>
GeneBank Accession#	<a href="#">BC018488</a>
Protein Accession#	<a href="#">AAH18488</a>
Gene Name	RABIF
Gene Alias	MSS4, RASGFR3, RASGRF3
Gene Description	RAB interacting factor
Omim ID	<a href="#">603417</a>
Gene Ontology	<a href="#">Hyperlink</a>

**Gene Summary**

The Sec4/Rab-related small GTP-binding proteins are involved in the regulation of intracellular vesicular transport. Mss4 stimulates GTP-GDP exchange in Sec4 and Rab and binds to a subset of genetically related Rab proteins.[supplied by OMIM]

**Other Designations**

OTTHUMP00000038814|RAB-interacting factor|Ras-specific guanine-releasing factor 3|guanine nucleotide exchange factor MSS4|mammalian suppressor of SEC4

**Disease**

- [Genetic Predisposition to Disease](#)
- [Hypertension](#)