

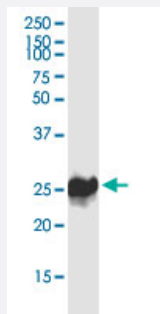
CX Grade

RAB27A monoclonal antibody (M02J), clone 1G7

Catalog # H00005873-M02J

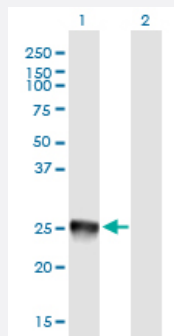
Size 100 ug

Applications



Western Blot (Cell lysate)

RAB27A monoclonal antibody (M02J), clone 1G7. Western Blot analysis of RAB27A expression in HL-60.

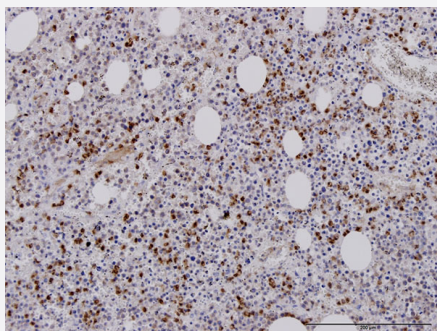


Western Blot (Transfected lysate)

Western Blot analysis of RAB27A expression in transfected 293T cell line by RAB27A monoclonal antibody (M02J), clone 1G7.

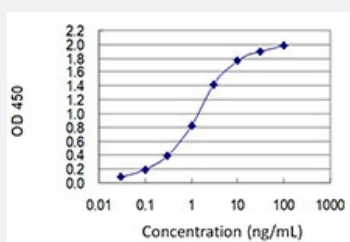
Lane 1: RAB27A transfected lysate (Predicted MW: 24.9 KDa).

Lane 2: Non-transfected lysate.



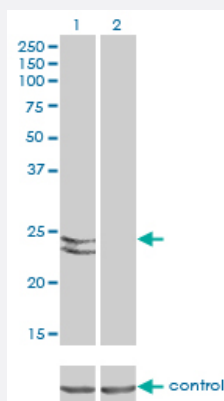
Immunohistochemistry (Formalin/PFA-fixed paraffin-embedded sections)

Immunoperoxidase of monoclonal antibody to RAB27A on formalin-fixed paraffin-embedded human lymphoma. [antibody concentration 3 ug/ml]



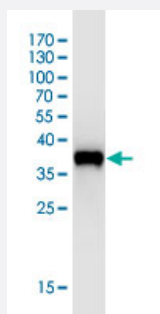
Sandwich ELISA (Recombinant protein)

Detection limit for recombinant GST tagged RAB27A is 0.03 ng/ml as a capture antibody.



RNAi Knockdown (Antibody validated)

Western blot analysis of RAB27A over-expressed 293 cell line, cotransfected with RAB27A Validated Chimera RNAi (Cat # H00005873-R01V) (Lane 2) or non-transfected control (Lane 1). Blot probed with RAB27A monoclonal antibody (M02), clone 1G7 (Cat # H00005873-M02). GAPDH (36.1 kDa) used as specificity and loading control.



Western Blot detection against Immunogen (36.74 KDa) .

Specification

Product Description	Mouse monoclonal antibody raised against a partial recombinant RAB27A. This product is belong to Cell Culture Grade Antibody (CX Grade).
Immunogen	RAB27A (NP_004571, 122 a.a. ~ 221 a.a) partial recombinant protein with GST tag. MW of the GST tag alone is 26 KDa.
Sequence	YCENPDMLCGNKSLEDQRVVKEEEAIALAEKYGIPYFETSAANGTNISQAIEMLLDLIMKRMERC VDKSWIPEGVVRNNGHASTDQLSEEKEKGACGC
Host	Mouse
Reactivity	Human
Interspecies Antigen Sequence	Mouse (93); Rat (95)
Preparation Method	Cell Culture Production
Isotype	IgG1 Kappa
Quality Control Testing	Antibody Reactive Against Recombinant Protein. Western Blot detection against Immunogen (36.74 KDa) .
Storage Buffer	In 1x PBS, pH 7.4

Storage Instruction

Store at -20°C or lower. Aliquot to avoid repeated freezing and thawing.

Applications

- Western Blot (Cell lysate)

RAB27A monoclonal antibody (M02J), clone 1G7. Western Blot analysis of RAB27A expression in HL-60.

[Protocol Download](#)

- Western Blot (Transfected lysate)

Western Blot analysis of RAB27A expression in transfected 293T cell line by RAB27A monoclonal antibody (M02J), clone 1G7.

Lane 1: RAB27A transfected lysate (Predicted MW: 24.9 KDa).

Lane 2: Non-transfected lysate.

[Protocol Download](#)

- Western Blot (Recombinant protein)

[Protocol Download](#)

- Immunohistochemistry (Formalin/PFA-fixed paraffin-embedded sections)

Immunoperoxidase of monoclonal antibody to RAB27A on formalin-fixed paraffin-embedded human lymphoma. [antibody concentration 3 ug/ml]

[Protocol Download](#)

- Sandwich ELISA (Recombinant protein)

Detection limit for recombinant GST tagged RAB27A is 0.03 ng/ml as a capture antibody.

[Protocol Download](#)

- ELISA

- RNAi Knockdown (Antibody validated)

Western blot analysis of RAB27A over-expressed 293 cell line, cotransfected with RAB27A Validated Chimera RNAi (Cat # H00005873-R01V) (Lane 2) or non-transfected control (Lane 1). Blot probed with RAB27A monoclonal antibody (M02), clone 1G7 (Cat # H00005873-M02). GAPDH (36.1 kDa) used as specificity and loading control.

[Protocol Download](#)

Gene Info — RAB27A

Entrez GeneID [5873](#)**GeneBank Accession#** [NM_004580](#)**Protein Accession#** [NP_004571](#)**Gene Name** RAB27A**Gene Alias** GS2, HsT18676, MGC117246, RAB27, RAM**Gene Description** RAB27A, member RAS oncogene family**Omim ID** [603868](#) [607624](#)**Gene Ontology** [Hyperlink](#)

Gene Summary The protein encoded by this gene belongs to the small GTPase superfamily, Rab family. The protein is membrane-bound and may be involved in protein transport and small GTPase mediated signal transduction. Mutations in this gene are associated with Griscelli syndrome type 2. Alternative splicing occurs at this locus and four transcript variants encoding the same protein have been identified. [provided by RefSeq]

Other Designations GTP-binding protein Ram|Ras-related protein Rab-27A

Disease

- [Arthritis](#)
- [Genetic Predisposition to Disease](#)
- [Lymphohistiocytosis](#)