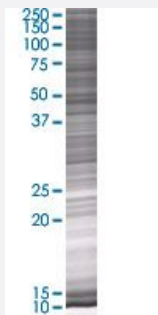


MAP4K2 293T Cell Transient Overexpression Lysate(Denatured)

Catalog # H00005871-T01

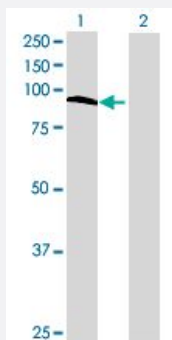
Size 100 uL

Applications



SDS-PAGE Gel

MAP4K2 transfected lysate.



Western Blot

Lane 1: MAP4K2 transfected lysate (90.31 KDa)

Lane 2: Non-transfected lysate.

Specification

Transfected Cell Line 293T

Plasmid pCMV-MAP4K2 full-length

Host Human

Theoretical MW (kDa) 90.31

Quality Control Testing Transient overexpression cell lysate was tested with Anti-MAP4K2 antibody ([H00005871-B01](#)) by Western Blots.
SDS-PAGE Gel
MAP4K2 transfected lysate.
Western Blot
Lane 1: MAP4K2 transfected lysate (90.31 KDa)
Lane 2: Non-transfected lysate.

Storage Buffer	1X Sample Buffer (50 mM Tris-HCl, 2% SDS, 10% glycerol, 300 mM 2-mercaptoethanol, 0.01% Bromophenol blue)
Storage Instruction	Store at -80°C. Aliquot to avoid repeated freezing and thawing.

Applications

- Western Blot

Gene Info — MAP4K2

Entrez GeneID	5871
GeneBank Accession#	NM_004579
Protein Accession#	NP_004570
Gene Name	MAP4K2
Gene Alias	BL44, GCK, RAB8IP
Gene Description	mitogen-activated protein kinase kinase kinase kinase 2
Omim ID	603166
Gene Ontology	Hyperlink
Gene Summary	The protein encoded by this gene is a member of the serine/threonine protein kinase family. Although this kinase is found in many tissues, its expression in lymphoid follicles is restricted to the cells of germinal centre, where it may participate in B-cell differentiation. This kinase can be activated by TNF-alpha, and has been shown to specifically activate MAP kinases. This kinase is also found to interact with TNF receptor-associated factor 2 (TRAF2), which is involved in the activation of MAP3K1/MEKK1. [provided by RefSeq]
Other Designations	B lymphocyte serine/threonine protein kinase Rab8 interacting protein germinal centre kinase (G C kinase)

Pathway

- [MAPK signaling pathway](#)

Disease

- [Cardiovascular Diseases](#)
- [Diabetes Mellitus](#)
- [Edema](#)