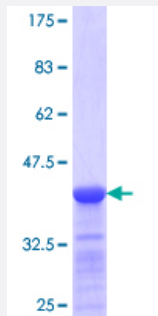


RAB1A (Human) Recombinant Protein (Q01)

Catalog # H00005861-Q01

Size 25 ug, 10 ug

Applications



Specification

Product Description	Human RAB1A partial ORF (NP_004152.1, 106 a.a. - 204 a.a.) recombinant protein with GST-tag at N-terminal.
Sequence	LQEIDRYASENVNKLVLGNKCDLTTKKVVDYTTAKEFADSLGIPFLETSAKNATNVEQSFMTMAAE IKKRMGPGATAGGAEKSNVKIQSTPVKQSGGGC
Host	Wheat Germ (in vitro)
Theoretical MW (kDa)	36.63
Interspecies Antigen Sequence	Mouse (100); Rat (100)
Preparation Method	in vitro wheat germ expression system
Purification	Glutathione Sepharose 4 Fast Flow
Quality Control Testing	12.5% SDS-PAGE Stained with Coomassie Blue.
Storage Buffer	50 mM Tris-HCl, 10 mM reduced Glutathione, pH=8.0 in the elution buffer.
Storage Instruction	Store at -80°C. Aliquot to avoid repeated freezing and thawing.
Note	Best use within three months from the date of receipt of this protein.

Applications

- Enzyme-linked Immunoabsorbent Assay
- Western Blot (Recombinant protein)
- Antibody Production
- Protein Array

Gene Info — RAB1A

Entrez GeneID [5861](#)

GeneBank Accession# [NM_004161](#)

Protein Accession# [NP_004152.1](#)

Gene Name RAB1A

Gene Alias DKFZp564B163, RAB1, YPT1

Gene Description RAB1A, member RAS oncogene family

Omim ID [179508](#)

Gene Ontology [Hyperlink](#)

Gene Summary This gene encodes a member of the Ras superfamily of GTPases. Members of the gene family cycle between inactive GDP-bound and active GTP-bound forms. This small GTPase controls vesicle traffic from the endoplasmic reticulum to the Golgi apparatus. Multiple alternatively spliced transcript variants have been identified for this gene which encode different protein isoforms. [provided by RefSeq]

Other Designations GTP binding protein Rab1a|RAB1, member RAS oncogene family|Rab GTPase YPT1 homolog