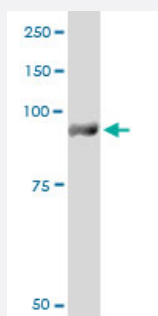


PYGM monoclonal antibody (M10), clone 2C4

Catalog # H00005837-M10

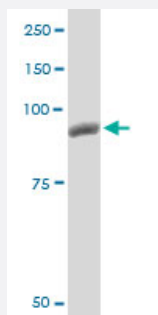
Size 100 ug

Applications



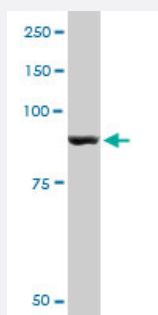
Western Blot (Cell lysate)

PYGM monoclonal antibody (M10), clone 2C4. Western Blot analysis of PYGM expression in NIH/3T3(Cat # L018V1).



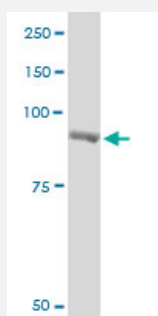
Western Blot (Cell lysate)

PYGM monoclonal antibody (M10), clone 2C4. Western Blot analysis of PYGM expression in PC-12(Cat # L012V1).



Western Blot (Cell lysate)

PYGM monoclonal antibody (M10), clone 2C4. Western Blot analysis of PYGM expression in HepG2(Cat # L019V1).

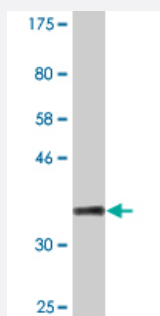
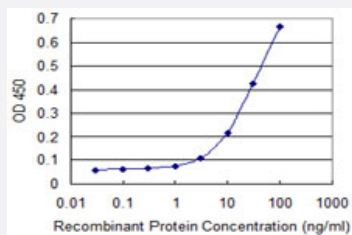


Western Blot (Cell lysate)

PYGM monoclonal antibody (M10), clone 2C4. Western Blot analysis of PYGM expression in Raw 264.7(Cat # L024V1).

Sandwich ELISA (Recombinant protein)

Detection limit for recombinant GST tagged PYGM is 1 ng/ml as a capture antibody.



Western Blot detection against Immunogen (37.73 KDa) .

Specification

Product Description	Mouse monoclonal antibody raised against a partial recombinant PYGM.
Immunogen	PYGM (NP_005600.1, 734 a.a. ~ 842 a.a) partial recombinant protein with GST tag. MW of the GST tag alone is 26 KDa.
Sequence	DRPELRQVIEQLSSGFFSPKQPDLFKDMNMLMHHDRFKVFADYEDYKCKQEKVSALYKNPREWT RMVIRNIATSGKFSSDRTIAQYAREIWGVEPSRQRLPAPDEAI
Host	Mouse
Reactivity	Human, Mouse, Rat
Interspecies Antigen Sequence	Mouse (95); Rat (95)
Isotype	IgG1 Kappa
Quality Control Testing	Antibody Reactive Against Recombinant Protein. Western Blot detection against Immunogen (37.73 KDa) .
Storage Buffer	In 1x PBS, pH 7.4
Storage Instruction	Store at -20°C or lower. Aliquot to avoid repeated freezing and thawing.

Applications

- Western Blot (Cell lysate)

PYGM monoclonal antibody (M10), clone 2C4. Western Blot analysis of PYGM expression in NIH/3T3(Cat # L018V1).

[Protocol Download](#)

- Western Blot (Cell lysate)

PYGM monoclonal antibody (M10), clone 2C4. Western Blot analysis of PYGM expression in PC-12(Cat # L012V1).

[Protocol Download](#)

- Western Blot (Cell lysate)

PYGM monoclonal antibody (M10), clone 2C4. Western Blot analysis of PYGM expression in HepG2(Cat # L019V1).

[Protocol Download](#)

- Western Blot (Cell lysate)

PYGM monoclonal antibody (M10), clone 2C4. Western Blot analysis of PYGM expression in Raw 264.7(Cat # L024V1).

[Protocol Download](#)

- Western Blot (Recombinant protein)

[Protocol Download](#)

- Sandwich ELISA (Recombinant protein)

Detection limit for recombinant GST tagged PYGM is 1 ng/ml as a capture antibody.

[Protocol Download](#)

- ELISA

Gene Info — PYGM

Entrez GeneID	5837
---------------	----------------------

GeneBank Accession#	NM_005609
---------------------	---------------------------

Protein Accession#	NP_005600.1
--------------------	-----------------------------

Gene Name	PYGM
-----------	------

Gene Alias	-
Gene Description	phosphorylase, glycogen, muscle
Omim ID	232600 608455
Gene Ontology	Hyperlink
Gene Summary	This gene encodes a muscle enzyme involved in glycogenolysis. Highly similar enzymes encoded by different genes are found in liver and brain. Mutations in this gene are associated with McArdle disease (myophosphorylase deficiency), a glycogen storage disease of muscle. Alternative splicing results in multiple transcript variants
Other Designations	McArdle syndrome glycogen phosphorylase glycogen storage disease type V myophosphorylase phosphorylase, glycogen; muscle (McArdle syndrome, glycogen storage disease type V)

Pathway

- [Insulin signaling pathway](#)
- [Starch and sucrose metabolism](#)

Disease

- [Glycogen Storage Disease Type V](#)
- [Muscular Diseases](#)