

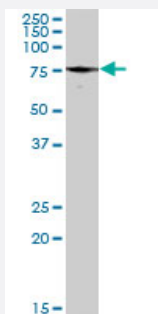
MaxPab®

PXN purified MaxPab rabbit polyclonal antibody (D01P)

Catalog # H00005829-D01P

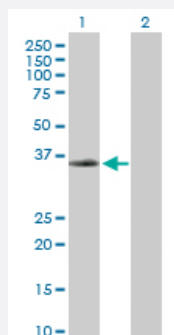
Size 100 ug

Applications



Western Blot (Cell lysate)

PXN MaxPab rabbit polyclonal antibody. Western Blot analysis of PXN expression in A-431.

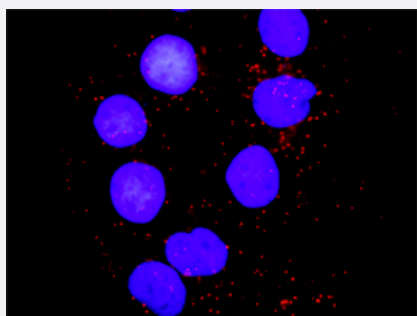


Western Blot (Transfected lysate)

Western Blot analysis of PXN expression in transfected 293T cell line ([H00005829-T03](#)) by PXN MaxPab polyclonal antibody.

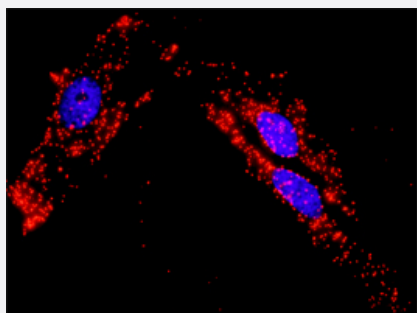
Lane 1: PXN transfected lysate(27.70 KDa).

Lane 2: Non-transfected lysate.



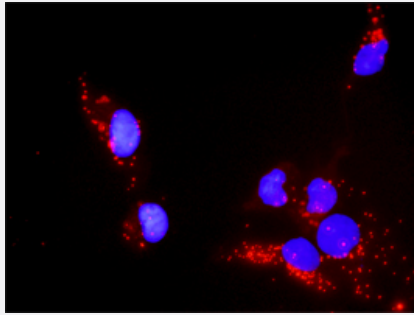
In situ Proximity Ligation Assay (Cell)

Proximity Ligation Analysis of protein-protein interactions between PXN and MAPK8. Huh7 cells were stained with anti-PXN rabbit purified polyclonal 1:1200 and anti-MAPK8 mouse monoclonal antibody 1:50. Each red dot represents the detection of protein-protein interaction complex, and nuclei were counterstained with DAPI (blue).



In situ Proximity Ligation Assay (Cell)

Proximity Ligation Analysis of protein-protein interactions between PXN and CTTN. HeLa cells were stained with anti-PXN rabbit purified polyclonal 1:1200 and anti-CTTN mouse monoclonal antibody 1:50. Each red dot represents the detection of protein-protein interaction complex, and nuclei were counterstained with DAPI (blue).



In situ Proximity Ligation Assay (Cell)

Proximity Ligation Analysis of protein-protein interactions between PXN and PTEN. Mahlavu cells were stained with anti-PXN rabbit purified polyclonal 1:1200 and anti-PTEN mouse monoclonal antibody 1:50. Each red dot represents the detection of protein-protein interaction complex, and nuclei were counterstained with DAPI (blue).

Specification

Product Description	Rabbit polyclonal antibody raised against a full-length human PXN protein.
Immunogen	PXN (XP_001132665.1, 1 a.a. ~ 262 a.a) full-length human protein.
Sequence	MPDTFNSRSPSVEGSLWAVGTESQGRDWRHLPTITSELGAPRCHTVPCAGSTALQEPGEPQG PPASPSCPEEALAATWEQPWASEVFGPERMPPSGAARSFQEVTEPAVVAVDRQAIFPDTWTLT EEHGLQQERPRPEPGRLGSSSPASVTTEQLGAKMTERGVSARPTQGPETPRSPEGTTEAATQD GKEQPELPCAMAMGTPSTTERISTSGQAGTSSHGCWAWPLAGLSVGRSSLTACSLPLCACLLG QKMLRHCGRT
Host	Rabbit
Reactivity	Human
Quality Control Testing	Antibody reactive against mammalian transfected lysate.
Storage Buffer	In 1x PBS, pH 7.4
Storage Instruction	Store at -20°C or lower. Aliquot to avoid repeated freezing and thawing.

Applications

● Western Blot (Cell lysate)

PXN MaxPab rabbit polyclonal antibody. Western Blot analysis of PXN expression in A-431.

[Protocol Download](#)

- Western Blot (Transfected lysate)

Western Blot analysis of PXN expression in transfected 293T cell line ([H00005829-T03](#)) by PXN MaxPab polyclonal antibody.

Lane 1: PXN transfected lysate(27.70 KDa).

Lane 2: Non-transfected lysate.

[Protocol Download](#)

- In situ* Proximity Ligation Assay (Cell)

Proximity Ligation Analysis of protein-protein interactions between PXN and MAPK8. Huh7 cells were stained with anti-PXN rabbit purified polyclonal 1:1200 and anti-MAPK8 mouse monoclonal antibody 1:50. Each red dot represents the detection of protein-protein interaction complex, and nuclei were counterstained with DAPI (blue).

- In situ* Proximity Ligation Assay (Cell)

Proximity Ligation Analysis of protein-protein interactions between PXN and CTTN. HeLa cells were stained with anti-PXN rabbit purified polyclonal 1:1200 and anti-CTTN mouse monoclonal antibody 1:50. Each red dot represents the detection of protein-protein interaction complex, and nuclei were counterstained with DAPI (blue).

- In situ* Proximity Ligation Assay (Cell)

Proximity Ligation Analysis of protein-protein interactions between PXN and PTEN. Mahlavu cells were stained with anti-PXN rabbit purified polyclonal 1:1200 and anti-PTEN mouse monoclonal antibody 1:50. Each red dot represents the detection of protein-protein interaction complex, and nuclei were counterstained with DAPI (blue).

Gene Info — PXN

Entrez GeneID	5829
GeneBank Accession#	XM_001132665
Protein Accession#	XP_001132665.1
Gene Name	PXN
Gene Alias	FLJ16691
Gene Description	paxillin
Omim ID	602505
Gene Ontology	Hyperlink
Other Designations	-

Publication Reference

- [An analysis of protein-protein interactions in cross-talk pathways reveals CRKL as a novel prognostic marker in hepatocellular carcinoma.](#)

Liu CH, Chen TC, Chau GY, Jan YH, Chen CH, Hsu CN, Lin KT, Juang YL, Lu PJ, Cheng HC, Chen MH, Chang CF, Ting YS, Kao CY, Hsiao M, Huang CY.

Molecular & Cellular Proteomics 2013 May; 12(5):1335.

Application: Profiling, Human, Huh7 cells, Mahlavu cells

Pathway

- [Chemokine signaling pathway](#)
- [Focal adhesion](#)
- [Leukocyte transendothelial migration](#)
- [Regulation of actin cytoskeleton](#)
- [VEGF signaling pathway](#)

Disease

- [Carcinoma](#)
- [Lung Neoplasms](#)