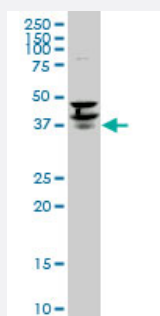


PURA monoclonal antibody (M02), clone 1C10

Catalog # H00005813-M02

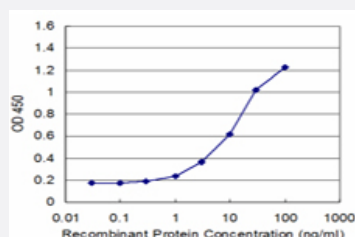
Size 100 ug

Applications



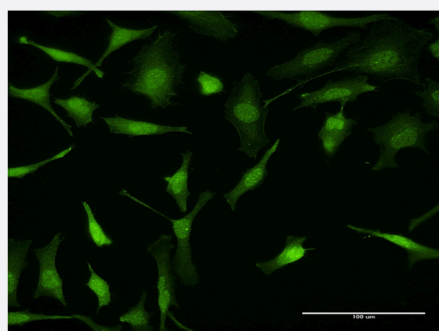
Western Blot (Cell lysate)

PURA monoclonal antibody (M02), clone 1C10. Western Blot analysis of PURA expression in PC-12 (Cat # L012V1).



Sandwich ELISA (Recombinant protein)

Detection limit for recombinant GST tagged PURA is approximately 1ng/ml as a capture antibody.



Immunofluorescence

Immunofluorescence of monoclonal antibody to PURA on HeLa cell . [antibody concentration 10 ug/ml]



Western Blot detection against Immunogen (37.84 KDa) .

Specification

Product Description	Mouse monoclonal antibody raised against a partial recombinant PURA.
Immunogen	PURA (NP_005850, 183 a.a. ~ 292 a.a) partial recombinant protein with GST tag. MW of the GST tag alone is 26 KDa.
Sequence	TQGQTIALPAQGLIEFRDALAKLIDDDYGVVEEPAELPEGTSLTVDNKRFFFDVGSNKYGVFMRVSEVKPTYRNSITVPYKVVAKFGHTFCKYSEETKKIQEKQREKRAAC
Host	Mouse
Reactivity	Human, Rat
Interspecies Antigen Sequence	Mouse (99); Rat (99)
Isotype	IgG2a Kappa
Quality Control Testing	Antibody Reactive Against Recombinant Protein. Western Blot detection against Immunogen (37.84 KDa) .
Storage Buffer	In 1x PBS, pH 7.4
Storage Instruction	Store at -20°C or lower. Aliquot to avoid repeated freezing and thawing.

Applications

- Western Blot (Cell lysate)

PURA monoclonal antibody (M02), clone 1C10. Western Blot analysis of PURA expression in PC-12 (Cat # L012V1).

[Protocol Download](#)

- Western Blot (Recombinant protein)

[Protocol Download](#)

- Sandwich ELISA (Recombinant protein)

Detection limit for recombinant GST tagged PURA is approximately 1ng/ml as a capture antibody.

[Protocol Download](#)

- ELISA

- Immunofluorescence

Immunofluorescence of monoclonal antibody to PURA on HeLa cell . [antibody concentration 10 ug/ml]

Gene Info — PURA

Entrez GeneID [5813](#)

GeneBank Accession# [NM_005859](#)

Protein Accession# [NP_005850](#)

Gene Name PURA

Gene Alias PUR-ALPHA, PUR1, PURALPHA

Gene Description purine-rich element binding protein A

Omim ID [600473](#)

Gene Ontology [Hyperlink](#)

Gene Summary This gene product is a sequence-specific, single-stranded DNA-binding protein. It binds preferentially to the single strand of the purine-rich element termed PUR, which is present at origins of replication and in gene flanking regions in a variety of eukaryotes from yeasts through humans. Thus, it is implicated in the control of both DNA replication and transcription. Deletion of this gene has been associated with myelodysplastic syndrome and acute myelogenous leukemia. [provided by RefSeq]

Other Designations purine-rich single-stranded DNA-binding protein alpha|transcriptional activator protein PUR-alpha

Disease

- [Disease Progression](#)

- [Disease Susceptibility](#)
- [HIV Infections](#)