

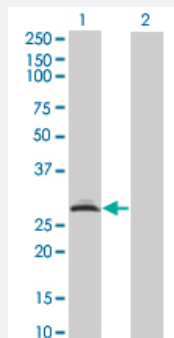
CX Grade

# RAD1 monoclonal antibody (M01J), clone 1G2

Catalog # H00005810-M01J

Size 100 ug

## Applications

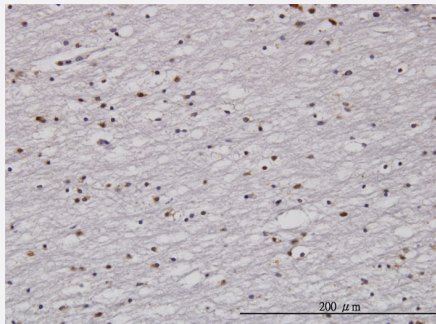


### Western Blot (Transfected lysate)

Western Blot analysis of RAD1 expression in transfected 293T cell line by RAD1 monoclonal antibody (M01J), clone 1G2.

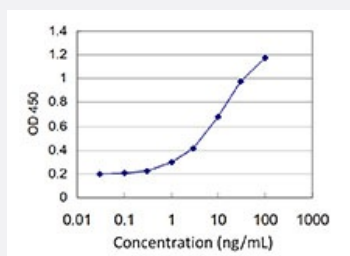
Lane 1: RAD1 transfected lysate (32.43 kDa).

Lane 2: Non-transfected lysate.



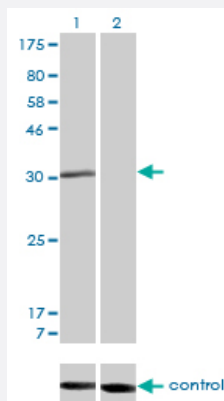
### Immunohistochemistry (Formalin/PFA-fixed paraffin-embedded sections)

Immunoperoxidase of monoclonal antibody to RAD1 on formalin-fixed paraffin-embedded human lateral ventricle wall. [antibody concentration 3 ug/ml]



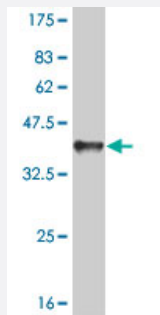
### Sandwich ELISA (Recombinant protein)

Detection limit for recombinant GST tagged RAD1 is approximately 0.3 ng/ml as a capture antibody.



## RNAi Knockdown (Antibody validated)

Western blot analysis of RAD1 over-expressed 293 cell line, cotransfected with RAD1 Validated Chimera RNAi ( Cat # H00005810-R01V ) (Lane 2) or non-transfected control (Lane 1). Blot probed with RAD1 monoclonal antibody (M01), clone 1G2 (Cat # H00005810-M01 ). GAPDH ( 36.1 kDa ) used as specificity and loading control.



Western Blot detection against Immunogen (35.53 KDa) .

## Specification

<b>Product Description</b>	Mouse monoclonal antibody raised against a partial recombinant RAD1. This product is belong to Cell Culture Grade Antibody (CX Grade).
<b>Immunogen</b>	RAD1 (AAH06837, 1 a.a. ~ 90 a.a) partial recombinant protein with GST tag. MW of the GST tag alone is 26 KDa.
<b>Sequence</b>	MPLL TQQIQDEDDQYSLVASLDNVRNLSTILKAIHFREHATCFATKNGIKVTVENAKCVQANAFIQA GIFQEFKVQEESVTRINLTVLL
<b>Host</b>	Mouse
<b>Reactivity</b>	Human
<b>Preparation Method</b>	Cell Culture Production
<b>Isotype</b>	IgG3 Kappa
<b>Quality Control Testing</b>	Antibody Reactive Against Recombinant Protein. Western Blot detection against Immunogen (35.53 KDa) .
<b>Storage Buffer</b>	In 1x PBS, pH 7.4
<b>Storage Instruction</b>	Store at -20°C or lower. Aliquot to avoid repeated freezing and thawing.

## Applications

- Western Blot (Transfected lysate)

Western Blot analysis of RAD1 expression in transfected 293T cell line by RAD1 monoclonal antibody (M01J), clone 1G2.

Lane 1: RAD1 transfected lysate(32.43 KDa).

Lane 2: Non-transfected lysate.

[Protocol Download](#)

- Western Blot (Recombinant protein)

[Protocol Download](#)

- Immunohistochemistry (Formalin/PFA-fixed paraffin-embedded sections)

Immunoperoxidase of monoclonal antibody to RAD1 on formalin-fixed paraffin-embedded human lateral ventricle wall. [antibody concentration 3 ug/ml]

[Protocol Download](#)

- Sandwich ELISA (Recombinant protein)

Detection limit for recombinant GST tagged RAD1 is approximately 0.3ng/ml as a capture antibody.

[Protocol Download](#)

- ELISA

- RNAi Knockdown (Antibody validated)

Western blot analysis of RAD1 over-expressed 293 cell line, cotransfected with RAD1 Validated Chimera RNAi ( Cat # H00005810-R01V ) (Lane 2) or non-transfected control (Lane 1). Blot probed with RAD1 monoclonal antibody (M01), clone 1G2 (Cat # H00005810-M01 ). GAPDH ( 36.1 kDa ) used as specificity and loading control.

[Protocol Download](#)

## Gene Info — RAD1

Entrez GeneID	<a href="#">5810</a>
---------------	----------------------

GeneBank Accession#	<a href="#">BC006837</a>
---------------------	--------------------------

Protein Accession#	<a href="#">AAH06837</a>
--------------------	--------------------------

Gene Name	RAD1
-----------	------

Gene Alias	HRAD1, REC1
Gene Description	RAD1 homolog (S. pombe)
Omim ID	<a href="#">603153</a>
Gene Ontology	<a href="#">Hyperlink</a>
Gene Summary	<p>This gene encodes a component of a heterotrimeric cell cycle checkpoint complex, known as the 9-1-1 complex, that is activated to stop cell cycle progression in response to DNA damage or incomplete DNA replication. The 9-1-1 complex is recruited by RAD17 to affected sites where it may attract specialized DNA polymerases and other DNA repair effectors. Alternatively spliced transcript variants of this gene have been described. [provided by RefSeq]</p>
Other Designations	DNA repair exonuclease REC1 OTTHUMP00000115992 RAD1 homolog Rad1-like DNA damage checkpoint cell cycle checkpoint protein Hrad1 checkpoint control protein HRAD1 exonuclease homolog RAD1

## Disease

- [Breast cancer](#)
- [Breast Neoplasms](#)
- [Genetic Predisposition to Disease](#)
- [Kidney Failure](#)
- [Narcolepsy](#)