

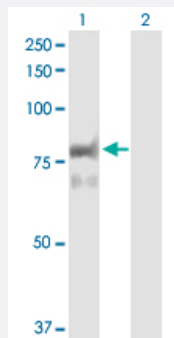
MaxPab®

PTPRR purified MaxPab rabbit polyclonal antibody (D01P)

Catalog # H00005801-D01P

Size 100 ug

Applications

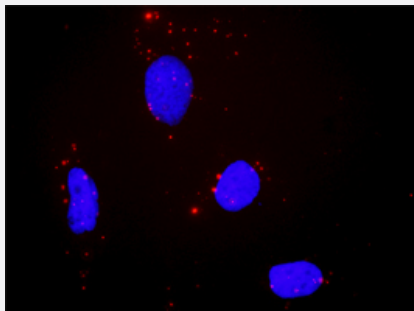


Western Blot (Transfected lysate)

Western Blot analysis of PTPRR expression in transfected 293T cell line ([H00005801-T02](#)) by PTPRR MaxPab polyclonal antibody.

Lane 1: PTPRR transfected lysate(73.90 KDa).

Lane 2: Non-transfected lysate.



In situ Proximity Ligation Assay (Cell)

Proximity Ligation Analysis of protein-protein interactions between PTPRR and MAPK1. HeLa cells were stained with anti-PTPRR rabbit purified polyclonal 1:1200 and anti-MAPK1 mouse monoclonal antibody 1:50. Each red dot represents the detection of protein-protein interaction complex, and nuclei were counterstained with DAPI (blue).

Specification

Product Description

Rabbit polyclonal antibody raised against a full-length human PTPRR protein.

Immunogen

PTPRR (NP_002840.1, 1 a.a. ~ 657 a.a) full-length human protein.

Sequence	MRRAVCFPALCLLLNLHAAGCFSGNNDHFLAINQKKSGKPVFIYKHSQDIEKSLDIAPQKIYRHSYH SSSEAQVSKRHQVNSAFPRPAYDPSLNLLAMDGGQDLEVENLPIPAANVIVVTLQMDVNKLNITLL RIFRQGVAAALGLLPQQVHINRLIGKKNSIELFVSPINRKTGISDALPSEEVLRSLNINVLHQSLSQFGI TEVSPEKNVLQGGQHEADKIWSKEGFYAVVIFLSIFVIIVTCLMILYRLKERFQLSLRQDKEKNQEIHL PITLQPALSEAKTVHSMVQPEQAPKVLNVVDPQGRGAPEIRATTATSVCPSPFKMKPIGLQERR GSNVSLTLDMSLGNIEPFVSIPTPREKVAMEYLSASRILTRSRLRDVVASSHLLQSEFMEIPMN FVDPKEIDIPRHGTKNRYKTILPNPLSRVCLRPKNVTDSLSTYNANYIRGYSGKEKAFIATQGPMINT VDDFWQMVWQEDSPVVMITKLKEKNEKCVLYWPEKRGYGVKVEVLVISVNECDNYTIRNLVLKQ GSHTQHVHKHYWYTSWPDHKTPDSAQPLLQLMLDVEEDRLASQGRGPVVVHCSAGIGRTGCFIAT SIGCQQLKEEGVVDALSVCQLRMDRGMVQTSEQYEFVHHALCLYESRLSAETVQ
Host	Rabbit
Reactivity	Human
Interspecies Antigen Sequence	Mouse (89); Rat (89)
Quality Control Testing	Antibody reactive against mammalian transfected lysate.
Storage Buffer	In 1x PBS, pH 7.4
Storage Instruction	Store at -20°C or lower. Aliquot to avoid repeated freezing and thawing.

Applications

- Western Blot (Transfected lysate)

Western Blot analysis of PTPRR expression in transfected 293T cell line ([H00005801-T02](#)) by PTPRR MaxPab polyclonal antibody.

Lane 1: PTPRR transfected lysate(73.90 KDa).

Lane 2: Non-transfected lysate.

[Protocol Download](#)

- In situ* Proximity Ligation Assay (Cell)

Proximity Ligation Analysis of protein-protein interactions between PTPRR and MAPK1. HeLa cells were stained with anti-PTPRR rabbit purified polyclonal 1:1200 and anti-MAPK1 mouse monoclonal antibody 1:50. Each red dot represents the detection of protein-protein interaction complex, and nuclei were counterstained with DAPI (blue).

Gene Info — PTPRR

Entrez GeneID [5801](#)

GeneBank Accession# [NM_002849](#)

Protein Accession#	NP_002840.1
Gene Name	PTPRR
Gene Alias	DKFZp781C1038, EC-PTP, FLJ34328, MGC131968, MGC148170, PCPTP1, PTP-SL, PTPBR7, PTPRQ
Gene Description	protein tyrosine phosphatase, receptor type, R
Omim ID	602853
Gene Ontology	Hyperlink
Gene Summary	<p>The protein encoded by this gene is a member of the protein tyrosine phosphatase (PTP) family. PTPs are known to be signaling molecules that regulate a variety of cellular processes including cell growth, differentiation, mitotic cycle, and oncogenic transformation. This PTP possesses an extracellular region, a single transmembrane region, and a single intracellular catalytic domains, and thus represents a receptor-type PTP. The similar gene predominately expressed in mouse brain was found to associate with, and thus regulate the activity and cellular localization of MAP kinases. The rat counterpart of this gene was reported to be regulated by the nerve growth factor, which suggested the function of this gene in neuronal growth and differentiation. [provided by RefSeq]</p>
Other Designations	Ch-1 PTPase protein tyrosine phosphatase Cr1PTPase protein-tyrosine phosphatase NC-PTPC OM1

Pathway

- [MAPK signaling pathway](#)

Disease

- [Kidney Failure](#)
- [Tobacco Use Disorder](#)