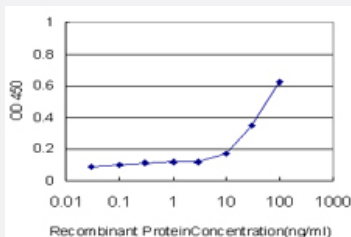


PTPRE monoclonal antibody (M04), clone 2D10

Catalog # H00005791-M04

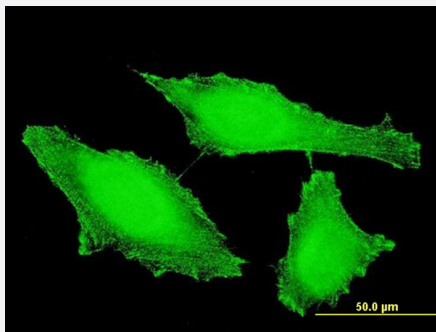
Size 100 ug

Applications



Sandwich ELISA (Recombinant protein)

Detection limit for recombinant GST tagged PTPRE is approximately 10ng/ml as a capture antibody.



Immunofluorescence

Immunofluorescence of monoclonal antibody to PTPRE on HeLa cell .
[antibody concentration 10 ug/ml]

Specification

Product Description	Mouse monoclonal antibody raised against a partial recombinant PTPRE.
Immunogen	PTPRE (AAH50062, 511 a.a. ~ 600 a.a) partial recombinant protein with GST tag. MW of the GST tag alone is 26 KDa.
Sequence	WRMIWEWKSHTIVMLTEVQEREQDKCYQYWPTEGSVTHGEITIEIKNDTLSEASIRDFLVTLNQPQARQEEQVRVVRQFHFHGWPEIGI
Host	Mouse
Reactivity	Human

Interspecies Antigen Sequence

Mouse (90); Rat (91)

Isotype

IgG2a Kappa

Quality Control Testing

Antibody Reactive Against Recombinant Protein.

Storage Buffer

In 1x PBS, pH 7.4

Storage Instruction

Store at -20°C or lower. Aliquot to avoid repeated freezing and thawing.

Applications

- Sandwich ELISA (Recombinant protein)

Detection limit for recombinant GST tagged PTPRE is approximately 10ng/ml as a capture antibody.

[Protocol Download](#)

- ELISA

- Immunofluorescence

Immunofluorescence of monoclonal antibody to PTPRE on HeLa cell . [antibody concentration 10 ug/ml]

Gene Info — PTPRE

Entrez GeneID[5791](#)**GeneBank Accession#**[BC050062](#)**Protein Accession#**[AAH50062](#)**Gene Name**

PTPRE

Gene Alias

DKFZp313F1310, FLJ57799, FLJ58245, HPTPE, PTPE, R-PTP-EPSILON

Gene Description

protein tyrosine phosphatase, receptor type, E

Omim ID[600926](#)**Gene Ontology**[Hyperlink](#)

Gene Summary

The protein encoded by this gene is a member of the protein tyrosine phosphatase (PTP) family. PTPs are known to be signaling molecules that regulate a variety of cellular processes including cell growth, differentiation, mitotic cycle, and oncogenic transformation. Two alternatively spliced transcript variants of this gene have been reported, one of which encodes a receptor-type PTP that possesses a short extracellular domain, a single transmembrane region, and two tandem intracytoplasmic catalytic domains; Another one encodes a PTP that contains a distinct hydrophilic N-terminus, and thus represents a nonreceptor-type isoform of this PTP. Studies of the similar gene in mice suggested the regulatory roles of this PTP in RAS related signal transduction pathways, cytokines induced SATA signaling, as well as the activation of voltage-gated K⁺ channels. [provided by RefSeq]

Other Designations

OTTHUMP00000020735|OTTHUMP00000020736|protein tyrosine phosphatase epsilon|protein tyrosine phosphatase, receptor type, epsilon polypeptide

Disease

- [Alzheimer Disease](#)
- [Asthma](#)
- [Genetic Predisposition to Disease](#)
- [Hypersensitivity](#)
- [Tobacco Use Disorder](#)