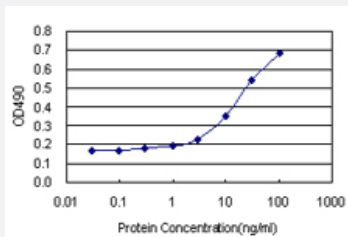


# PTPN6 (Human) Matched Antibody Pair

Catalog # H00005777-AP22

Size 1 Set

## Applications



Sandwich ELISA detection sensitivity ranging from 1 ng/ml to 100 ng/ml.

## Specification

<b>Product Description</b>	This antibody pair set comes with a matched antibody pair to detect and quantify the protein level of human PTPN6.
<b>Reactivity</b>	Human
<b>Quality Control Testing</b>	Standard curve using recombinant protein ( H00005777-P01 ) as an analyte. Sandwich ELISA detection sensitivity ranging from 1 ng/ml to 100 ng/ml.
<b>Supplied Product</b>	Antibody pair set content: 1. Capture antibody: rabbit MaxPab® affinity purified polyclonal anti-PTPN6 (100 ug) 2. Detection antibody: mouse purified polyclonal anti-PTPN6 (20 ug) *Reagents are sufficient for at least 1-2 x 96 well plates using recommended protocols.
<b>Storage Instruction</b>	Store reagents of the antibody pair set at -20°C or lower. Please aliquot to avoid repeated freeze thaw cycle. Reagents should be returned to -20°C storage immediately after use.

## Applications

- ELISA Pair (Recombinant protein)

[Protocol Download](#)

## Gene Info — PTPN6

Entrez GeneID [5777](#)

Gene Name PTPN6

Gene Alias HCP, HCPH, HPTP1C, PTP-1C, SH-PTP1, SHP-1, SHP-1L, SHP1

Gene Description protein tyrosine phosphatase, non-receptor type 6

Omim ID [176883](#)

Gene Ontology [Hyperlink](#)

**Gene Summary**

The protein encoded by this gene is a member of the protein tyrosine phosphatase (PTP) family. PTPs are known to be signaling molecules that regulate a variety of cellular processes including cell growth, differentiation, mitotic cycle, and oncogenic transformation. N-terminal part of this PTP contains two tandem Src homolog (SH2) domains, which act as protein phospho-tyrosine binding domains, and mediate the interaction of this PTP with its substrates. This PTP is expressed primarily in hematopoietic cells, and functions as an important regulator of multiple signaling pathways in hematopoietic cells. This PTP has been shown to interact with, and dephosphorylate a wide spectrum of phospho-proteins involved in hematopoietic cell signaling. Multiple alternatively spliced variants of this gene, which encode distinct isoforms, have been reported. [provided by RefSeq]

**Other Designations** hematopoietic cell phosphatase|hematopoietic cell protein-tyrosine phosphatase|protein-tyrosine phosphatase 1C

## Pathway

- [Adherens junction](#)
- [B cell receptor signaling pathway](#)
- [Jak-STAT signaling pathway](#)
- [Natural killer cell mediated cytotoxicity](#)
- [T cell receptor signaling pathway](#)

## Disease

- [Alzheimer disease](#)
- [Cerebral Amyloid Angiopathy](#)
- [Genetic Predisposition to Disease](#)

- [Lupus Erythematosus](#)
- [Neuroblastoma](#)