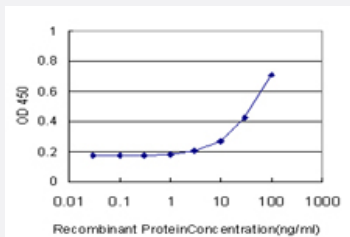


# PTPN4 monoclonal antibody (M01), clone 3C8

Catalog # H00005775-M01

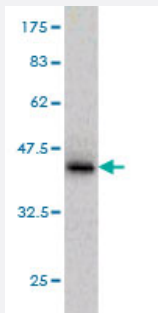
Size 100 ug

## Applications



### Sandwich ELISA (Recombinant protein)

Detection limit for recombinant GST tagged PTPN4 is approximately 3ng/ml as a capture antibody.



Western Blot detection against Immunogen (36.74 KDa) .

## Specification

<b>Product Description</b>	Mouse monoclonal antibody raised against a partial recombinant PTPN4.
<b>Immunogen</b>	PTPN4 (NP_002821, 361 a.a. ~ 460 a.a) partial recombinant protein with GST tag. MW of the GST tag alone is 26 KDa.
<b>Sequence</b>	KPLARKLMDWEVVSRRNSISDDRLETQSLPSRSPPGTPNHRNSTFTQEGTRLRPSSVGHLVDHMHVHTSPSEVFNQRSPSSQANSIVLESSPSQETPGDG
<b>Host</b>	Mouse
<b>Reactivity</b>	Human

Interspecies Antigen Sequence	Mouse (91); Rat (93)
Isotype	IgG3 Kappa
Quality Control Testing	Antibody Reactive Against Recombinant Protein. Western Blot detection against Immunogen (36.74 KDa) .
Storage Buffer	In 1x PBS, pH 7.4
Storage Instruction	Store at -20°C or lower. Aliquot to avoid repeated freezing and thawing.

## Applications

- Western Blot (Recombinant protein)

[Protocol Download](#)

- Sandwich ELISA (Recombinant protein)

Detection limit for recombinant GST tagged PTPN4 is approximately 3ng/ml as a capture antibody.

[Protocol Download](#)

- ELISA

## Gene Info — PTPN4

Entrez GeneID	<a href="#">5775</a>
GeneBank Accession#	<a href="#">NM_002830</a>
Protein Accession#	<a href="#">NP_002821</a>
Gene Name	PTPN4
Gene Alias	PTPMEG, PTPMEG1
Gene Description	protein tyrosine phosphatase, non-receptor type 4 (megakaryocyte)
Omim ID	<a href="#">176878</a>
Gene Ontology	<a href="#">Hyperlink</a>

**Gene Summary**

The protein encoded by this gene is a member of the protein tyrosine phosphatase (PTP) family. PTPs are known to be signaling molecules that regulate a variety of cellular processes including cell growth, differentiation, mitotic cycle, and oncogenic transformation. This protein contains a C-terminal PTP domain and an N-terminal domain homologous to the band 4.1 superfamily of cytoskeletal-associated proteins. This PTP has been shown to interact with glutamate receptor delta 2 and epsilon subunits, and is thought to play a role in signalling downstream of the glutamate receptors through tyrosine dephosphorylation. [provided by RefSeq]

**Other Designations**

PTPase-MEG1|megakaryocyte phosphatase|megakaryocyte protein-tyrosine phosphatase|protein tyrosine phosphatase MEG1|protein tyrosine phosphatase, non-receptor type 4