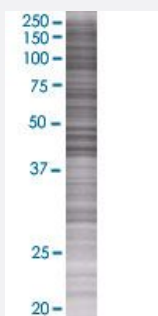


PTPN2 293T Cell Transient Overexpression Lysate(Denatured)

Catalog # H00005771-T01

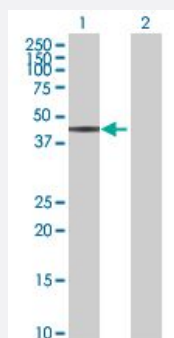
Size 100 uL

Applications



SDS-PAGE Gel

PTPN2 transfected lysate.



Western Blot

Lane 1: PTPN2 transfected lysate (42.68 KDa)

Lane 2: Non-transfected lysate.

Specification

Transfected Cell Line 293T

Plasmid pCMV-PTPN2 full-length

Host Human

Theoretical MW (kDa) 42.68

Quality Control Testing Transient overexpression cell lysate was tested with Anti-PTPN2 antibody ([H00005771-B01](#)) by Western Blots.
SDS-PAGE Gel
PTPN2 transfected lysate.
Western Blot
Lane 1: PTPN2 transfected lysate (42.68 KDa)
Lane 2: Non-transfected lysate.

Storage Buffer

1X Sample Buffer (50 mM Tris-HCl, 2% SDS, 10% glycerol, 300 mM 2-mercaptoethanol, 0.01% Bromophenol blue)

Storage Instruction

Store at -80°C. Aliquot to avoid repeated freezing and thawing.

Applications

- Western Blot

Gene Info — PTPN2

Entrez GeneID[5771](#)**GeneBank Accession#**[NM_080422.1](#)**Protein Accession#**[NP_536347.1](#)**Gene Name**

PTPN2

Gene Alias

PTPT, TC-PTP, TCELLPTP, TCPTP

Gene Description

protein tyrosine phosphatase, non-receptor type 2

Omim ID[176887](#)**Gene Ontology**[Hyperlink](#)**Gene Summary**

The protein encoded by this gene is a member of the protein tyrosine phosphatase (PTP) family. Members of the PTP family share a highly conserved catalytic motif, which is essential for the catalytic activity. PTPs are known to be signaling molecules that regulate a variety of cellular processes including cell growth, differentiation, mitotic cycle, and oncogenic transformation. Epidermal growth factor receptor and the adaptor protein Shc were reported to be substrates of this PTP, which suggested the roles in growth factor mediated cell signaling. Three alternatively spliced variants of this gene, which encode isoforms differing at their extreme C-termini, have been described. The different C-termini are thought to determine the substrate specificity, as well as the cellular localization of the isoforms. Two highly related but distinctly processed pseudogenes that localize to distinct chromosomes have been reported. [provided by RefSeq]

Other Designations

T-cell protein tyrosine phosphatase

Disease

- [Addison Disease](#)

- [Arthritis](#)
- [Autoimmune Diseases](#)
- [Carcinoma](#)
- [Celiac Disease](#)
- [Colitis](#)
- [Crohn Disease](#)
- [Diabetes Mellitus](#)
- [Disease Progression](#)
- [Disease Susceptibility](#)
- [Genetic Predisposition to Disease](#)
- [Ileal Diseases](#)
- [Inflammatory Bowel Diseases](#)
- [Lupus Erythematosus](#)
- [Prostatic Neoplasms](#)
- [Rectal Fistula](#)
- [Tobacco Use Disorder](#)