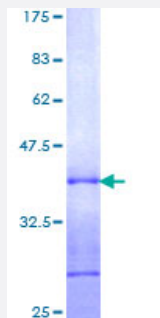


QSCN6 (Human) Recombinant Protein (Q01)

Catalog # H00005768-Q01

Size 25 ug, 10 ug

Applications



Specification

Product Description	Human QSCN6 partial ORF (NP_002817, 81 a.a. - 180 a.a.) recombinant protein with GST-tag at N-terminal.
Sequence	KALAEDVKAWRPALYLAALDCAEETNSAVCRDFNIPGFPTVRFFKAFTKNGSGAVFPVAGADVQ TLRERLIDALESHHDTWPPACPPLEPAKLEEIDGFF
Host	Wheat Germ (in vitro)
Theoretical MW (kDa)	36.74
Interspecies Antigen Sequence	Mouse (84); Rat (79)
Preparation Method	in vitro wheat germ expression system
Purification	Glutathione Sepharose 4 Fast Flow
Quality Control Testing	12.5% SDS-PAGE Stained with Coomassie Blue.
Storage Buffer	50 mM Tris-HCl, 10 mM reduced Glutathione, pH=8.0 in the elution buffer.
Storage Instruction	Store at -80°C. Aliquot to avoid repeated freezing and thawing.
Note	Best use within three months from the date of receipt of this protein.

Applications

- Enzyme-linked Immunoabsorbent Assay
- Western Blot (Recombinant protein)
- Antibody Production
- Protein Array

Gene Info — QSOX1

Entrez GeneID [5768](#)

GeneBank Accession# [NM_002826](#)

Protein Accession# [NP_002817](#)

Gene Name QSOX1

Gene Alias FLJ34858, Q6, QSCN6

Gene Description quiescin Q6 sulfhydryl oxidase 1

Omim ID [603120](#)

Gene Ontology [Hyperlink](#)

Gene Summary This gene encodes a protein that contains domains of thioredoxin and ERV1, members of two long-standing gene families. The gene expression is induced as fibroblasts begin to exit the proliferative cycle and enter quiescence, suggesting that this gene plays an important role in growth regulation. Two transcript variants encoding two different isoforms have been found for this gene. [provided by RefSeq]

Other Designations OTTHUMP00000033189|OTTHUMP00000039111