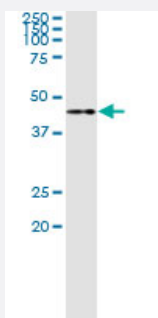


TWF1 (Human) IP-WB Antibody Pair

Catalog # H00005756-PW3

Size 1 Set

Applications



Immunoprecipitation of TWF1 transfected lysate using rabbit polyclonal anti-TWF1 and Protein A Magnetic Bead ([U0007](#)), and immunoblotted with mouse purified polyclonal anti-TWF1.

Specification

Product Description	This IP-WB antibody pair set comes with one antibody for immunoprecipitation and another to detect the precipitated protein in western blot.
Reactivity	Human
Quality Control Testing	Immunoprecipitation-Western Blot (IP-WB) Immunoprecipitation of TWF1 transfected lysate using rabbit polyclonal anti-TWF1 and Protein A Magnetic Bead (U0007), and immunoblotted with mouse purified polyclonal anti-TWF1.
Supplied Product	Antibody pair set content: 1. Antibody pair for IP: rabbit polyclonal anti-TWF1 (300 ul) 2. Antibody pair for WB: mouse purified polyclonal anti-TWF1 (50 ug)
Storage Instruction	Store reagents of the antibody pair set at -20°C or lower. Please aliquot to avoid repeated freeze thaw cycle. Reagents should be returned to -20°C storage immediately after use.

Applications

- Immunoprecipitation-Western Blot

[Protocol Download](#)

Gene Info — TWF1

Entrez GeneID	5756
Gene Name	TWF1
Gene Alias	A6, MGC23788, MGC41876, PTK9
Gene Description	twinfilin, actin-binding protein, homolog 1 (Drosophila)
Omim ID	610932
Gene Ontology	Hyperlink
Gene Summary	This gene encodes twinfilin, an actin monomer-binding protein conserved from yeast to mammals . Studies of the mouse counterpart suggest that this protein may be an actin monomer-binding protein, and its localization to cortical G-actin-rich structures may be regulated by the small GTPase RAC1. [provided by RefSeq]
Other Designations	A6 protein tyrosine kinase PTK9 protein tyrosine kinase 9 protein tyrosine kinase 9 twinfilin 1

Disease

- [Birth Weight](#)
- [Genetic Predisposition to Disease](#)
- [Glioblastoma](#)
- [Glioma](#)
- [Leukemia](#)
- [Meningeal Neoplasms](#)
- [Meningioma](#)