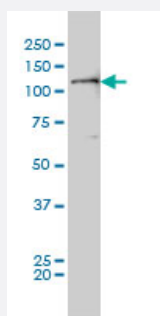


PTK2 monoclonal antibody (M01), clone 2C3

Catalog # H00005747-M01

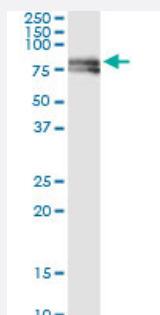
Size 100 ug

Applications



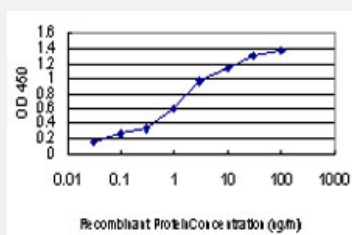
Western Blot (Cell lysate)

PTK2 monoclonal antibody (M01), clone 2C3 Western Blot analysis of PTK2 expression in HeLa S3 NE (Cat # L013V3).



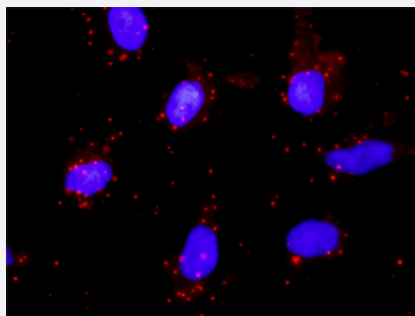
Immunoprecipitation

Immunoprecipitation of PTK2 transfected lysate using anti-PTK2 monoclonal antibody and Protein A Magnetic Bead, and immunoblotted with PTK2 MaxPab rabbit polyclonal antibody.



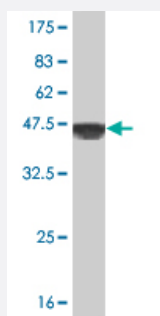
Sandwich ELISA (Recombinant protein)

Detection limit for recombinant GST tagged PTK2 is approximately 0.03ng/ml as a capture antibody.



In situ Proximity Ligation Assay (Cell)

Proximity Ligation Analysis of protein-protein interactions between STAT1 and PTK2. HeLa cells were stained with anti-STAT1 rabbit purified polyclonal 1:1200 and anti-PTK2 mouse monoclonal antibody 1:50. Each red dot represents the detection of protein-protein interaction complex, and nuclei were counterstained with DAPI (blue).



Western Blot detection against Immunogen (40.59 KDa) .

Specification

Product Description	Mouse monoclonal antibody raised against a partial recombinant PTK2.
Immunogen	PTK2 (AAH28733, 355 a.a. ~ 490 a.a) partial recombinant protein with GST tag. MW of the GST tag alone is 26 KDa.
Sequence	EGFYSPQHMVQTNHYQVSGYPGSHGITAMAGSIYPGQASLLDQTDSWNHRPQEIAMWQPNVED STVLDLRGIGQVLPHTLMEERLIRQQQEMEEDQRWLEKEERFLKPDVRLSRGSIDREDGSLQGPI GNQHIYQ
Host	Mouse
Reactivity	Human
Isotype	IgG1 Kappa
Quality Control Testing	Antibody Reactive Against Recombinant Protein. Western Blot detection against Immunogen (40.59 KDa) .
Storage Buffer	In 1x PBS, pH 7.4
Storage Instruction	Store at -20°C or lower. Aliquot to avoid repeated freezing and thawing.

Applications

- Western Blot (Cell lysate)

PTK2 monoclonal antibody (M01), clone 2C3 Western Blot analysis of PTK2 expression in Hela S3 NE (Cat # L013V3).

[Protocol Download](#)

- Western Blot (Recombinant protein)

[Protocol Download](#)

- Immunoprecipitation

Immunoprecipitation of PTK2 transfected lysate using anti-PTK2 monoclonal antibody and Protein A Magnetic Bead, and immunoblotted with PTK2 MaxPab rabbit polyclonal antibody.

[Protocol Download](#)

- Sandwich ELISA (Recombinant protein)

Detection limit for recombinant GST tagged PTK2 is approximately 0.03ng/ml as a capture antibody.

[Protocol Download](#)

- ELISA

- In situ* Proximity Ligation Assay (Cell)

Proximity Ligation Analysis of protein-protein interactions between STAT1 and PTK2. HeLa cells were stained with anti-STAT1 rabbit purified polyclonal 1:1200 and anti-PTK2 mouse monoclonal antibody 1:50. Each red dot represents the detection of protein-protein interaction complex, and nuclei were counterstained with DAPI (blue).

Gene Info — PTK2

Entrez GeneID [5747](#)

GeneBank Accession# [BC028733](#)

Protein Accession# [AAH28733](#)

Gene Name PTK2

Gene Alias FADK, FAK, FAK1, pp125FAK

Gene Description PTK2 protein tyrosine kinase 2

Omim ID [600758](#)

Gene Ontology

[Hyperlink](#)

Gene Summary

This gene encodes a cytoplasmic protein tyrosine kinase which is found concentrated in the focal adhesions that form between cells growing in the presence of extracellular matrix constituents. The encoded protein is a member of the FAK subfamily of protein tyrosine kinases but lacks significant sequence similarity to kinases from other subfamilies. Activation of this gene may be an important early step in cell growth and intracellular signal transduction pathways triggered in response to certain neural peptides or to cell interactions with the extracellular matrix. At least four transcript variants encoding four different isoforms have been found for this gene, but the full-length nature of only two of them have been determined. [provided by RefSeq]

Other Designations

focal adhesion kinase 1

Publication Reference

- [MicroRNA-101-5p Suppresses the Expression of the Ras-Related Protein RAP1A.](#)

Shibayama Y, Kubo Y, Nakagawa T, Iseki K.

Biological & Pharmaceutical Bulletin 2019 May; 42(8):1332.

Application: WB-Tr, Human, HeLa cells

- [JNK Pathway-associated Phosphatase Dephosphorylates Focal Adhesion Kinase and Suppresses Cell Migration.](#)

Li JP, Fu YN, Chen YR, Tan TH.

The Journal of Biological Chemistry 2010 Feb; 285(8):5472.

Application: WB, IP, Human, H1299 cells

Pathway

- [Axon guidance](#)
- [Chemokine signaling pathway](#)
- [ErbB signaling pathway](#)
- [Focal adhesion](#)
- [Leukocyte transendothelial migration](#)
- [Pathways in cancer](#)
- [Regulation of actin cytoskeleton](#)
- [Small cell lung cancer](#)

- [VEGF signaling pathway](#)

Disease

- [Autistic Disorder](#)
- [Genetic Predisposition to Disease](#)
- [HIV Infections](#)
- [Leukemia](#)
- [Mental Retardation](#)
- [Neovascularization](#)
- [Psychotic Disorders](#)
- [Schizophrenia](#)