

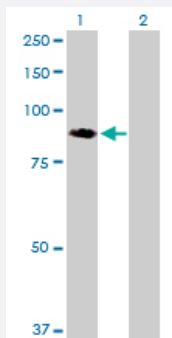
MaxPab®

PTK2 purified MaxPab rabbit polyclonal antibody (D01P)

Catalog # H00005747-D01P

Size 100 ug

Applications

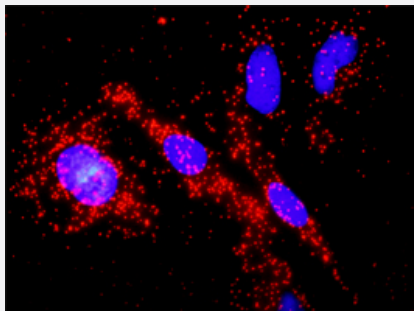


Western Blot (Transfected lysate)

Western Blot analysis of PTK2 expression in transfected 293T cell line ([H00005747-T01](#)) by PTK2 MaxPab polyclonal antibody.

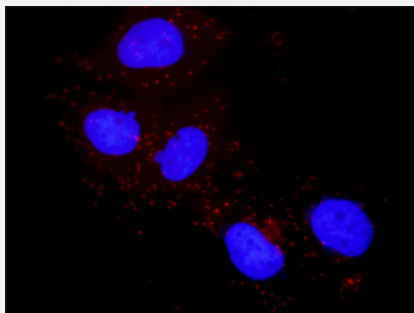
Lane 1: PTK2 transfected lysate(76.90 KDa).

Lane 2: Non-transfected lysate.



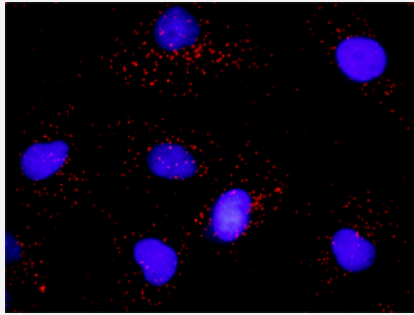
In situ Proximity Ligation Assay (Cell)

Proximity Ligation Analysis of protein-protein interactions between PTK2 and APC. HeLa cells were stained with anti-PTK2 rabbit purified polyclonal 1:1200 and anti-APC mouse monoclonal antibody 1:50. Each red dot represents the detection of protein-protein interaction complex, and nuclei were counterstained with DAPI (blue).



In situ Proximity Ligation Assay (Cell)

Proximity Ligation Analysis of protein-protein interactions between PTK2 and FLT1. Huh7 cells were stained with anti-PTK2 rabbit purified polyclonal 1:1200 and anti-FLT1 mouse monoclonal antibody 1:50. Each red dot represents the detection of protein-protein interaction complex, and nuclei were counterstained with DAPI (blue).



In situ Proximity Ligation Assay (Cell)

Proximity Ligation Analysis of protein-protein interactions between PTK2 and PLCG1. Mahlavu cells were stained with anti-PTK2 rabbit purified polyclonal 1:600 and anti-PLCG1 mouse monoclonal antibody 1:100. Each red dot represents the detection of protein-protein interaction complex, and nuclei were counterstained with DAPI (blue).

Specification

Product Description	Rabbit polyclonal antibody raised against a full-length human PTK2 protein.
Immunogen	PTK2 (AAH28733.1, 1 a.a. ~ 680 a.a) full-length human protein.
Sequence	<p>MKYQEVRCCLTSFNISVSFPAETDDYAEIIDEEDTYTMPSTRDYEIQRERIELGRCIGEGQFGDVHQGI</p> <p>YMPSPENPALAVAIKCKNCTSDSVREKFLQEALTMRQFDHPHVKLIGVITENPVWIMELCTLGELR</p> <p>SFLQVRKYSLDLASLILYAYQLSTALAYLESKRFBVHRDIAARNVLVSSNDCVKLGDFGLSRYMEDS</p> <p>TYKASKGKLPKWMAPESINFRRFTSASDVWMFGVCMWEILMHGVKPFQGVKNNDVIGRIENGE</p> <p>RLPMPNCPPTLYSLMTKCWAYDPSRRPRFTTELKQALSTILEEEKAQQEERMESRRQATVSW</p> <p>DSGGSDEAPPKPSRPGYSPRSSEGFYSPQHMVQTNHYQVSGYPGSHGITAMAGSIYPGQASL</p> <p>LDQTDSDWNHRPQEIAMWQPNVEDSTVLDLRGIGQVLPHTLMEERLIRQQQEMEEDQRWLEKEE</p> <p>RFLKPDVRLSRGSDREDGSLQGPIGNQHIQPVGKPDPAAPPKKPPRPGAPGHLGSLASLSSPA</p> <p>DSYNEGVKLKPQEISPPPTANLDRSNDKVYENVTLGLVKAVIEMSSKIQPAPPEEYVPMVKEVGLA</p> <p>LRTLLATVDETIPLLPASTHREIEMAQKLLNSDLGELINKMKLAQQYVMTSLQQEYKKQMLTAAHAL</p> <p>AVDAKNLLDVIDQARLKMLGQTRRH</p>
Host	Rabbit
Reactivity	Human
Quality Control Testing	Antibody reactive against mammalian transfected lysate.
Storage Buffer	In 1x PBS, pH 7.4
Storage Instruction	Store at -20°C or lower. Aliquot to avoid repeated freezing and thawing.

Applications

- Western Blot (Transfected lysate)

Western Blot analysis of PTK2 expression in transfected 293T cell line ([H00005747-T01](#)) by PTK2 MaxPab polyclonal antibody.

Lane 1: PTK2 transfected lysate(76.90 KDa).

Lane 2: Non-transfected lysate.

[Protocol Download](#)

- In situ* Proximity Ligation Assay (Cell)

Proximity Ligation Analysis of protein-protein interactions between PTK2 and APC. HeLa cells were stained with anti-PTK2 rabbit purified polyclonal 1:1200 and anti-APC mouse monoclonal antibody 1:50. Each red dot represents the detection of protein-protein interaction complex, and nuclei were counterstained with DAPI (blue).

- In situ* Proximity Ligation Assay (Cell)

Proximity Ligation Analysis of protein-protein interactions between PTK2 and FLT1. Huh7 cells were stained with anti-PTK2 rabbit purified polyclonal 1:1200 and anti-FLT1 mouse monoclonal antibody 1:50. Each red dot represents the detection of protein-protein interaction complex, and nuclei were counterstained with DAPI (blue).

- In situ* Proximity Ligation Assay (Cell)

Proximity Ligation Analysis of protein-protein interactions between PTK2 and PLCG1. Mahlavu cells were stained with anti-PTK2 rabbit purified polyclonal 1:600 and anti-PLCG1 mouse monoclonal antibody 1:100. Each red dot represents the detection of protein-protein interaction complex, and nuclei were counterstained with DAPI (blue).

Gene Info — PTK2

Entrez GeneID [5747](#)

GeneBank Accession# [BC028733.2](#)

Protein Accession# [AAH28733.1](#)

Gene Name PTK2

Gene Alias FADK, FAK, FAK1, pp125FAK

Gene Description PTK2 protein tyrosine kinase 2

Omim ID [600758](#)

Gene Ontology [Hyperlink](#)

Gene Summary

This gene encodes a cytoplasmic protein tyrosine kinase which is found concentrated in the focal adhesions that form between cells growing in the presence of extracellular matrix constituents. The encoded protein is a member of the FAK subfamily of protein tyrosine kinases but lacks significant sequence similarity to kinases from other subfamilies. Activation of this gene may be an important early step in cell growth and intracellular signal transduction pathways triggered in response to certain neural peptides or to cell interactions with the extracellular matrix. At least four transcript variants encoding four different isoforms have been found for this gene, but the full-length nature of only two of them have been determined. [provided by RefSeq]

Other Designations

focal adhesion kinase 1

Pathway

- [Axon guidance](#)
- [Chemokine signaling pathway](#)
- [ErbB signaling pathway](#)
- [Focal adhesion](#)
- [Leukocyte transendothelial migration](#)
- [Pathways in cancer](#)
- [Regulation of actin cytoskeleton](#)
- [Small cell lung cancer](#)
- [VEGF signaling pathway](#)

Disease

- [Autistic Disorder](#)
- [Genetic Predisposition to Disease](#)
- [HIV Infections](#)
- [Leukemia](#)
- [Mental Retardation](#)
- [Neovascularization](#)
- [Psychotic Disorders](#)

- [Schizophrenia](#)