

DNAXPAb

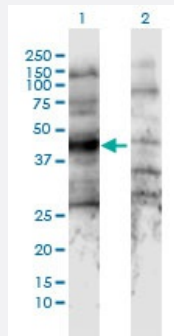
Hard-to-Find
Antibody

PTH2R DNAXPab

Catalog # H00005746-W01P

Size 100 ug

Applications



Western Blot (Transfected lysate)

Western Blot analysis of PTH2R expression in transfected 293T cell line by PTH2R DNAXPab polyclonal antibody.

Lane 1: PTH2R transfected lysate(34.21 KDa).

Lane 2: Non-transfected lysate.

Specification

Product Description	Rabbit polyclonal antibody raised against a partial-length human PTH2R DNA using DNAX™ Immune technology.
Technology	DNAX™ Immune
Immunogen	PTH2R (ADR82689.1, 27 a.a. ~ 145 a.a) partial-length human DNA
Sequence	DSDGTITIEEQMLVLKAKVQCELNITAQLQEGEGNCFPEWDGLICWPRGTVGKISAVPCPPYYDF NHKGVAFRHCNPNGTWDFMHSLNKTWANYSDCLRFLQPDISIGKQEPPERLY
Host	Rabbit
Reactivity	Human
Purification	Protein A
Quality Control Testing	Antibody reactive against mammalian transfected lysate.
Storage Buffer	In 1x PBS, pH 7.4
Storage Instruction	Store at -20°C or lower. Aliquot to avoid repeated freezing and thawing.

Applications

- Western Blot (Transfected lysate)

Western Blot analysis of PTH2R expression in transfected 293T cell line by PTH2R DNAPab polyclonal antibody.

Lane 1: PTH2R transfected lysate(34.21 KDa).

Lane 2: Non-transfected lysate.

[Protocol Download](#)

- Immunofluorescence (Transfected cell)

- Flow Cytometry (Transfected cell)

Gene Info — PTH2R

Entrez GeneID [5746](#)

GeneBank Accession# [HQ257935.1](#)

Protein Accession# [ADR82689.1](#)

Gene Name PTH2R

Gene Alias PTHR2

Gene Description parathyroid hormone 2 receptor

Omim ID [601469](#)

Gene Ontology [Hyperlink](#)

Gene Summary The protein encoded by this gene is a member of the G-protein coupled receptor family 2. This protein is a receptor for parathyroid hormone (PTH). This receptor is more selective in ligand recognition and has a more specific tissue distribution compared to parathyroid hormone receptor 1 (PTH1R). It is activated only by PTH and not by parathyroid hormone-like hormone (PTH1LH) and is particularly abundant in brain and pancreas. [provided by RefSeq]

Other Designations PTH2 receptor|parathyroid hormone receptor 2

Pathway

- [Neuroactive ligand-receptor interaction](#)

Disease

- [Fractures](#)
- [Osteoporosis](#)