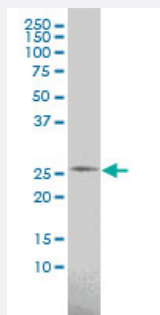


PSPH monoclonal antibody (M02), clone 2G9

Catalog # H00005723-M02

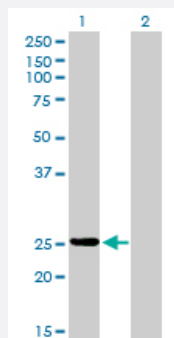
Size 100 ug

Applications



Western Blot (Cell lysate)

PSPH monoclonal antibody (M02), clone 2G9 Western Blot analysis of PSPH expression in K-562 (Cat # L009V1).

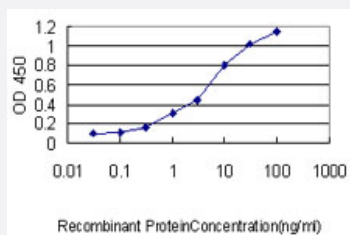


Western Blot (Transfected lysate)

Western Blot analysis of PSPH expression in transfected 293T cell line by PSPH monoclonal antibody (M02), clone 2G9.

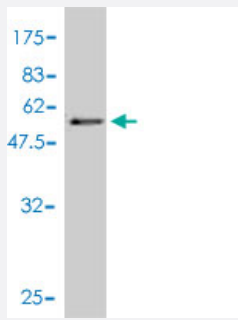
Lane 1: PSPH transfected lysate(25 KDa).

Lane 2: Non-transfected lysate.



Sandwich ELISA (Recombinant protein)

Detection limit for recombinant GST tagged PSPH is approximately 0.1ng/ml as a capture antibody.



Western Blot detection against Immunogen (50.49 KDa) .

Specification

Product Description	Mouse monoclonal antibody raised against a full length recombinant PSPH.
Immunogen	PSPH (AAH63614, 1 a.a. ~ 225 a.a) full-length recombinant protein with GST tag. MW of the GST tag alone is 26 KDa.
Sequence	MVSHSELRLKFYSADAVCFDVDSTVIREEGIDELAKICGVEDAVSEMTRRAMGGAVPFKAALTER LALIQPSREQVQRLIAEQPPHLTPGIRELVSRLQERNVQVFLISGGFRSMEHVASKLNIPATNVFAN RLKFYFNGEYAGFDETQPTAESGGKGKVIKLLKEKFHFKKIIMIGDGATDMEACPPADAFIGFGGN VIRQQVKDNAKWWYITDFVELLGELEE
Host	Mouse
Reactivity	Human
Isotype	IgG1 kappa
Quality Control Testing	Antibody Reactive Against Recombinant Protein. Western Blot detection against Immunogen (50.49 KDa) .
Storage Buffer	In 1x PBS, pH 7.4
Storage Instruction	Store at -20°C or lower. Aliquot to avoid repeated freezing and thawing.

Applications

- Western Blot (Cell lysate)

PSPH monoclonal antibody (M02), clone 2G9 Western Blot analysis of PSPH expression in K-562 (Cat # L009V1).

[Protocol Download](#)

- Western Blot (Transfected lysate)

Western Blot analysis of PSPH expression in transfected 293T cell line by PSPH monoclonal antibody (M02), clone 2G9.

Lane 1: PSPH transfected lysate(25 KDa).

Lane 2: Non-transfected lysate.

[Protocol Download](#)

- Western Blot (Recombinant protein)

[Protocol Download](#)

- Sandwich ELISA (Recombinant protein)

Detection limit for recombinant GST tagged PSPH is approximately 0.1ng/ml as a capture antibody.

[Protocol Download](#)

- ELISA

Gene Info — PSPH

Entrez GeneID [5723](#)

GeneBank Accession# [BC063614](#)

Protein Accession# [AAH63614](#)

Gene Name PSPH

Gene Alias PSP

Gene Description phosphoserine phosphatase

Omim ID [172480](#)

Gene Ontology [Hyperlink](#)

Gene Summary The protein encoded by this gene belongs to a subfamily of the phosphotransferases. This encoded enzyme is responsible for the third and last step in L-serine formation. It catalyzes magnesium-dependent hydrolysis of L-phosphoserine and is also involved in an exchange reaction between L-serine and L-phosphoserine. Deficiency of this protein is thought to be linked to Williams syndrome. [provided by RefSeq]

Other Designations L-3-phosphoserine phosphatase|O-phosphoserine phosphohydrolase|OTTHUMP00000025059|PSPase

Pathway

- [Glycine](#)
- [Metabolic pathways](#)