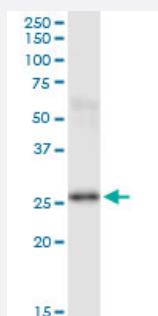


# PSPH monoclonal antibody (M01A), clone 3A5

Catalog # H00005723-M01A

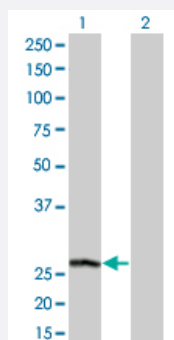
Size 200 uL

## Applications



### Western Blot (Tissue lysate)

PSPH monoclonal antibody (M01A), clone 3A5. Western Blot analysis of PSPH expression in human placenta.

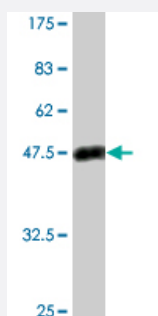


### Western Blot (Transfected lysate)

Western Blot analysis of PSPH expression in transfected 293T cell line by PSPH monoclonal antibody (M01A), clone 3A5.

Lane 1: PSPH transfected lysate(25 KDa).

Lane 2: Non-transfected lysate.



Western Blot detection against Immunogen (50.49 KDa) .

## Specification

### Product Description

Mouse monoclonal antibody raised against a full-length recombinant PSPH.

<b>Immunogen</b>	PSPH (AAH63614, 1 a.a. ~ 225 a.a) full-length recombinant protein with GST tag. MW of the GST tag alone is 26 KDa.
<b>Sequence</b>	MVSHSELRKLFYSADAVCFDVDSTVIREEGIDELAKICGVEDAVSEMTRRAMGGAVPFKAALTER LALIQPSREQVQRLIAEQPPHLTPGIRELVSRQLQERNVQVFLISGGFRSMEHVASKLNIPATNVFAN RLKIFYFNGEYAGFDETQPTAESGGKGKVIKLLKEKFHFKKIIMIGDGATDMEACPPADAFIGFGGN VIRQQVKDNAKWYITDFVELLGELEE
<b>Host</b>	Mouse
<b>Reactivity</b>	Human
<b>Isotype</b>	IgG2b Kappa
<b>Quality Control Testing</b>	Antibody Reactive Against Recombinant Protein. Western Blot detection against Immunogen (50.49 KDa) .
<b>Storage Buffer</b>	In ascites fluid
<b>Storage Instruction</b>	Store at -20°C or lower. Aliquot to avoid repeated freezing and thawing.

## Applications

- Western Blot (Tissue lysate)

PSPH monoclonal antibody (M01A), clone 3A5. Western Blot analysis of PSPH expression in human placenta.

[Protocol Download](#)

- Western Blot (Transfected lysate)

Western Blot analysis of PSPH expression in transfected 293T cell line by PSPH monoclonal antibody (M01A), clone 3A5.

Lane 1: PSPH transfected lysate(25 KDa).

Lane 2: Non-transfected lysate.

[Protocol Download](#)

- Western Blot (Recombinant protein)

[Protocol Download](#)

- ELISA

## Gene Info — PSPH

Entrez GeneID

[5723](#)

GeneBank Accession#	<a href="#">BC063614</a>
Protein Accession#	<a href="#">AAH63614</a>
Gene Name	PSPH
Gene Alias	PSP
Gene Description	phosphoserine phosphatase
Omim ID	<a href="#">172480</a>
Gene Ontology	<a href="#">Hyperlink</a>
Gene Summary	<p>The protein encoded by this gene belongs to a subfamily of the phosphotransferases. This encoded enzyme is responsible for the third and last step in L-serine formation. It catalyzes magnesium-dependent hydrolysis of L-phosphoserine and is also involved in an exchange reaction between L-serine and L-phosphoserine. Deficiency of this protein is thought to be linked to Williams syndrome. [provided by RefSeq</p>
Other Designations	L-3-phosphoserine phosphatase O-phosphoserine phosphohydrolase OTTHUMP00000025059 PSPase

## Pathway

- [Glycine](#)
- [Metabolic pathways](#)