

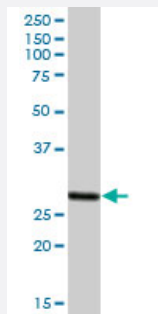
MaxPab®

PSME2 purified MaxPab mouse polyclonal antibody (B01P)

Catalog # H00005721-B01P

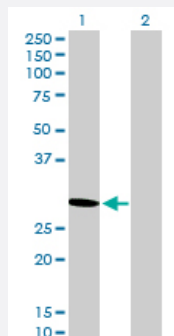
Size 50 ug

Applications



Western Blot (Tissue lysate)

PSME2 MaxPab polyclonal antibody. Western Blot analysis of PSME2 expression in human liver.

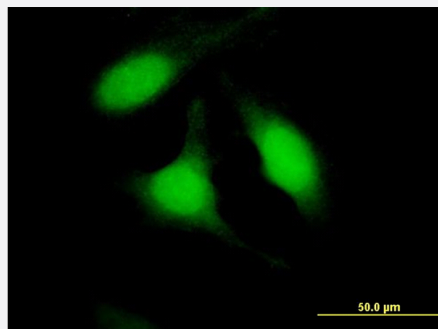


Western Blot (Transfected lysate)

Western Blot analysis of PSME2 expression in transfected 293T cell line ([H00005721-T01](#)) by PSME2 MaxPab polyclonal antibody.

Lane 1: PSME2 transfected lysate(26.29 KDa).

Lane 2: Non-transfected lysate.



Immunofluorescence

Immunofluorescence of purified MaxPab antibody to PSME2 on HeLa cell. [antibody concentration 10 ug/ml]

Specification

Product Description

Mouse polyclonal antibody raised against a full-length human PSME2 protein.

Immunogen	PSME2 (AAH04368.1, 1 a.a. ~ 239 a.a) full-length human protein.
Sequence	MAKPCGVRLSGEARKQVEVFRQNLFQEAEFLYRFLPQKIIMLNQLLQEDSLNVADLTSLRAPLDI PIPDPPPKDDEMETDKQEKKVPKCGFLPGNEKVLSELLALVKPEVWTLKEKCILVITWQHLPKIE DGNDFGVAIQEKVLERNVAVKTKVEAFQTTISKYFSERGDVAVAKASKETHVMDYRALVHERDEAA YGELRAMVLDLRAFYAELYHISSNLEKIVNPKGEEKPSMY
Host	Mouse
Reactivity	Human
Quality Control Testing	Antibody reactive against mammalian transfected lysate.
Storage Buffer	In 1x PBS, pH 7.4
Storage Instruction	Store at -20°C or lower. Aliquot to avoid repeated freezing and thawing.

Applications

- Western Blot (Tissue lysate)

PSME2 MaxPab polyclonal antibody. Western Blot analysis of PSME2 expression in human liver.

[Protocol Download](#)

- Western Blot (Transfected lysate)

Western Blot analysis of PSME2 expression in transfected 293T cell line ([H00005721-T01](#)) by PSME2 MaxPab polyclonal antibody.

Lane 1: PSME2 transfected lysate(26.29 KDa).

Lane 2: Non-transfected lysate.

[Protocol Download](#)

- Immunofluorescence

Immunofluorescence of purified MaxPab antibody to PSME2 on HeLa cell. [antibody concentration 10 ug/ml]

Gene Info — PSME2

Entrez GeneID	5721
GeneBank Accession#	BC004368.1
Protein Accession#	AAH04368.1
Gene Name	PSME2

Gene Alias	PA28B, PA28beta, REGbeta
Gene Description	proteasome (prosome, macropain) activator subunit 2 (PA28 beta)
Omim ID	602161
Gene Ontology	Hyperlink
Gene Summary	<p>The 26S proteasome is a multicatalytic proteinase complex with a highly ordered structure composed of 2 complexes, a 20S core and a 19S regulator. The 20S core is composed of 4 rings of 28 non-identical subunits; 2 rings are composed of 7 alpha subunits and 2 rings are composed of 7 beta subunits. The 19S regulator is composed of a base, which contains 6 ATPase subunits and 2 non-ATPase subunits, and a lid, which contains up to 10 non-ATPase subunits. Proteasomes are distributed throughout eukaryotic cells at a high concentration and cleave peptides in an ATP/ubiquitin-dependent process in a non-lysosomal pathway. An essential function of a modified proteasome, the immunoproteasome, is the processing of class I MHC peptides. The immunoproteasome contains an alternate regulator, referred to as the 11S regulator or PA28, that replaces the 19S regulator. Three subunits (alpha, beta and gamma) of the 11S regulator have been identified. This gene encodes the beta subunit of the 11S regulator, one of the two 11S subunits that is induced by gamma-interferon. Three beta and three alpha subunits combine to form a heterohexameric ring. Six pseudogenes have been identified on chromosomes 4, 5, 8, 10 and 13. [provided by RefSeq]</p>
Other Designations	11S regulator complex beta subunit MCP activator, 31-kD subunit activator of multicatalytic protease subunit 2 cell migration-inducing protein 22 proteasome activator 28-beta proteasome activator hPA28 subunit beta proteasome activator subunit 2

Pathway

- [Antigen processing and presentation](#)
- [Proteasome](#)

Disease

- [Disease Progression](#)
- [Disease Susceptibility](#)
- [HIV Infections](#)