

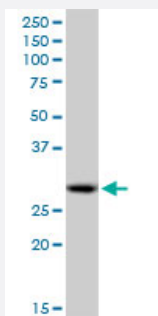
MaxPab®

PSME1 purified MaxPab mouse polyclonal antibody (B01P)

Catalog # H00005720-B01P

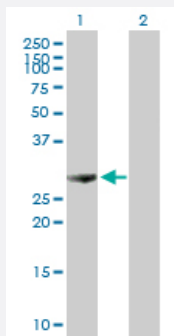
Size 50 ug

Applications



Western Blot (Cell lysate)

PSME1 MaxPab polyclonal antibody. Western Blot analysis of PSME1 expression in A-431.

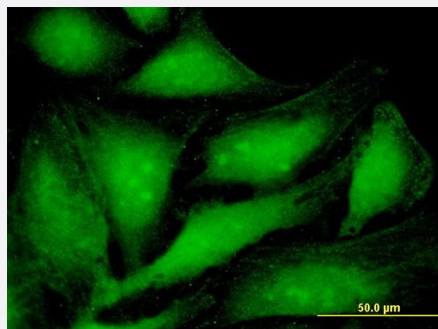


Western Blot (Transfected lysate)

Western Blot analysis of PSME1 expression in transfected 293T cell line by PSME1 MaxPab polyclonal antibody.

Lane 1: PSME1 transfected lysate(27.5 KDa).

Lane 2: Non-transfected lysate.



Immunofluorescence

Immunofluorescence of purified MaxPab antibody to PSME1 on HeLa cell. [antibody concentration 10 ug/ml]

Specification

Product Description

Mouse polyclonal antibody raised against a full-length human PSME1 protein.

Immunogen	PSME1 (AAH00352, 1 a.a. ~ 249 a.a) full-length human protein.
Sequence	MAMLRVQPEAQAKVDVFRDLCTKAENLLGSYFPKKISELDAFLKEPALNEANLSNLKAPLDIPV PDPVKEKEKEERKKQKEKEDKDEKKKGEDEDKGPPCGPVNCNEKIMVLLQRLKPEIKDVIEQLN LVTTWLQLQIPRIEDGNNFGVAVQEKFELMTSLHTKLEGFHTQISKYFSERGDAVTAAKQPHVG DYRQLVHELDEAEYRDIRLMVMEIRNAYAVLYDIILKNFEKLKKPRGETKGMYY
Host	Mouse
Reactivity	Human
Interspecies Antigen Sequence	Mouse (94); Rat (95)
Quality Control Testing	Antibody reactive against mammalian transfected lysate.
Storage Buffer	In 1x PBS, pH 7.4
Storage Instruction	Store at -20°C or lower. Aliquot to avoid repeated freezing and thawing.

Applications

- Western Blot (Cell lysate)

PSME1 MaxPab polyclonal antibody. Western Blot analysis of PSME1 expression in A-431.

[Protocol Download](#)

- Western Blot (Transfected lysate)

Western Blot analysis of PSME1 expression in transfected 293T cell line by PSME1 MaxPab polyclonal antibody.

Lane 1: PSME1 transfected lysate(27.5 KDa).

Lane 2: Non-transfected lysate.

[Protocol Download](#)

- Immunofluorescence

Immunofluorescence of purified MaxPab antibody to PSME1 on HeLa cell. [antibody concentration 10 ug/ml]

Gene Info — PSME1

Entrez GeneID	5720
GeneBank Accession#	BC000352
Protein Accession#	AAH00352

Gene Name	PSME1
Gene Alias	IFI5111, MGC8628, PA28A, PA28alpha, REGalpha
Gene Description	proteasome (prosome, macropain) activator subunit 1 (PA28 alpha)
Omim ID	600654
Gene Ontology	Hyperlink
Gene Summary	<p>The 26S proteasome is a multicatalytic proteinase complex with a highly ordered structure composed of 2 complexes, a 20S core and a 19S regulator. The 20S core is composed of 4 rings of 28 non-identical subunits; 2 rings are composed of 7 alpha subunits and 2 rings are composed of 7 beta subunits. The 19S regulator is composed of a base, which contains 6 ATPase subunits and 2 non-ATPase subunits, and a lid, which contains up to 10 non-ATPase subunits. Proteasomes are distributed throughout eukaryotic cells at a high concentration and cleave peptides in an ATP/ubiquitin-dependent process in a non-lysosomal pathway. An essential function of a modified proteasome, the immunoproteasome, is the processing of class I MHC peptides. The immunoproteasome contains an alternate regulator, referred to as the 11S regulator or PA28, that replaces the 19S regulator. Three subunits (alpha, beta and gamma) of the 11S regulator have been identified. This gene encodes the alpha subunit of the 11S regulator, one of the two 11S subunits that is induced by gamma-interferon. Three alpha and three beta subunits combine to form a heterohexameric ring. Two transcripts encoding different isoforms have been identified. [provided by RefSeq]</p>
Other Designations	11S regulator complex alpha subunit 29-kD MCP activator subunit activator of multicatalytic protease subunit 1 interferon gamma up-regulated I-5111 protein interferon-gamma IEF SSP 5111 interferon-gamma-inducible protein 5111 proteasome activator subunit

Pathway

- [Antigen processing and presentation](#)
- [Proteasome](#)