

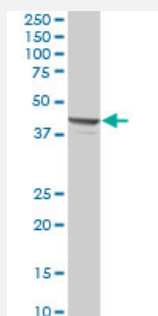
MaxPab®

PSMD13 purified MaxPab mouse polyclonal antibody (B02P)

Catalog # H00005719-B02P

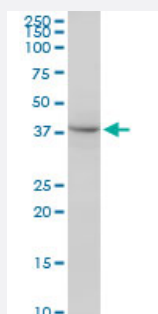
Size 50 ug

Applications



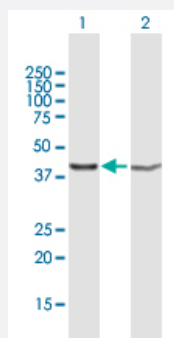
Western Blot (Tissue lysate)

PSMD13 MaxPab polyclonal antibody. Western Blot analysis of PSMD13 expression in human liver.



Western Blot (Cell lysate)

PSMD13 MaxPab polyclonal antibody. Western Blot analysis of PSMD13 expression in HeLa.



Western Blot (Transfected lysate)

Western Blot analysis of PSMD13 expression in transfected 293T cell line ([H00005719-T04](#)) by PSMD13 MaxPab polyclonal antibody.

Lane 1: PSMD13 transfected lysate(41.36 KDa).

Lane 2: Non-transfected lysate.

Specification

Product Description

Mouse polyclonal antibody raised against a full-length human PSMD13 protein.

Immunogen	PSMD13 (NP_002808, 1 a.a. ~ 376 a.a) full-length human protein.
Sequence	MKDVPGLQQSQSSGPGQPAVWHRLEELYTKKLWHQLTLQVLDFVQDPCFAQGDGLIKLYENFI SEFEHRVNPLSLVEIILHVVRQMTDPNVALTFLEKTREKVKSSDEAVILCKTAIGALKLNIGDLQVTK ETIEDVEEMLNNLPGVTSVHSRFDLSSKYYQTIGNHASYYKDALRFLGCVDIKDLPVSEQQERAF TLGLAGLLGEGVFNFGEMLMHPVLESRLNTDRQWLIDTLAFNSGNVERFQTLKTAWGQQPDAA NEAQLLRKIQLLCLMEMTFTRPANHRQLTFEEIAKSAKITVNEVELLMKALSVGLVKGSIDEVDKR VHMTWVQPRVLDLQQIKGMKDRLEFWCTDVKSMEMLVEHQAHDILT
Host	Mouse
Reactivity	Human
Interspecies Antigen Sequence	Mouse (97); Rat (97)
Quality Control Testing	Antibody reactive against mammalian transfected lysate.
Storage Buffer	In 1x PBS, pH 7.4
Storage Instruction	Store at -20°C or lower. Aliquot to avoid repeated freezing and thawing.

Applications

- Western Blot (Tissue lysate)

PSMD13 MaxPab polyclonal antibody. Western Blot analysis of PSMD13 expression in human liver.

[Protocol Download](#)

- Western Blot (Cell lysate)

PSMD13 MaxPab polyclonal antibody. Western Blot analysis of PSMD13 expression in HeLa.

[Protocol Download](#)

- Western Blot (Transfected lysate)

Western Blot analysis of PSMD13 expression in transfected 293T cell line ([H00005719-T04](#)) by PSMD13 MaxPab polyclonal antibody.

Lane 1: PSMD13 transfected lysate(41.36 KDa).

Lane 2: Non-transfected lysate.

[Protocol Download](#)

Gene Info — PSMD13

Entrez GeneID	5719
GeneBank Accession#	NM_002817
Protein Accession#	NP_002808
Gene Name	PSMD13
Gene Alias	HSPC027, Rpn9, S11, p40.5
Gene Description	proteasome (prosome, macropain) 26S subunit, non-ATPase, 13
Omim ID	603481
Gene Ontology	Hyperlink
Gene Summary	<p>The 26S proteasome is a multicatalytic proteinase complex with a highly ordered structure composed of 2 complexes, a 20S core and a 19S regulator. The 20S core is composed of 4 rings of 28 non-identical subunits; 2 rings are composed of 7 alpha subunits and 2 rings are composed of 7 beta subunits. The 19S regulator is composed of a base, which contains 6 ATPase subunits and 2 non-ATPase subunits, and a lid, which contains up to 10 non-ATPase subunits. Proteasomes are distributed throughout eukaryotic cells at a high concentration and cleave peptides in an ATP/ubiquitin-dependent process in a non-lysosomal pathway. An essential function of a modified proteasome, the immunoproteasome, is the processing of class I MHC peptides. This gene encodes a non-ATPase subunit of the 19S regulator. Two transcripts encoding different isoforms have been described. [provided by RefSeq]</p>
Other Designations	26S proteasome regulatory subunit S11 26S proteasome subunit p40.5 proteasome 26S non-ATPase subunit 13

Pathway

- [Proteasome](#)