

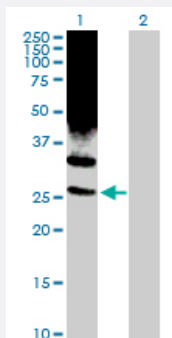
MaxPab®

## PSMD10 purified MaxPab rabbit polyclonal antibody (D01P)

Catalog # H00005716-D01P

Size 100 ug

### Applications

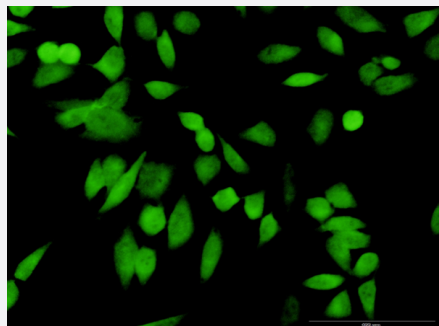


#### Western Blot (Transfected lysate)

Western Blot analysis of PSMD10 expression in transfected 293T cell line by PSMD10 MaxPab rabbit polyclonal antibody.

Lane 1: PSMD10 transfected lysate(24.40 kDa).

Lane 2: Non-transfected lysate.



#### Immunofluorescence

Immunofluorescence of purified MaxPab antibody to PSMD10 on HeLa cell.  
[antibody concentration 40 ug/ml]

### Specification

#### Product Description

Rabbit polyclonal antibody raised against a full-length human PSMD10 protein.

#### Immunogen

PSMD10 (NP\_002805.1, 1 a.a. ~ 226 a.a) full-length human protein.

#### Sequence

MEGCVSNLMVCNLAYSGKLEELKESILADKSLATRTDQDSRTALHWACSAGHTEMEFLLQLGVP  
VNDKDDAGWSPLHIAASAGRDEMKALLGKGAQVNAVQNQGCTPLHYAASKNRHEIAVMLLEGG  
ANPDAKDHYEATAMHRAAAKGNLKMILLYYKASTNIQDTEGNTPLHLACDEERVEEAKLLVSQG  
ASIMENKEEKTPLQVAKGGLGLILKRMVEG

#### Host

Rabbit

#### Reactivity

Human

Interspecies Antigen Sequence	Mouse (94); Rat (95)
Quality Control Testing	Antibody reactive against mammalian transfected lysate.
Storage Buffer	In 1x PBS, pH 7.4
Storage Instruction	Store at -20°C or lower. Aliquot to avoid repeated freezing and thawing.

## Applications

- Western Blot (Transfected lysate)

Western Blot analysis of PSMD10 expression in transfected 293T cell line by PSMD10 MaxPab rabbit polyclonal antibody.

Lane 1: PSMD10 transfected lysate(24.40 KDa).

Lane 2: Non-transfected lysate.

[Protocol Download](#)

- Immunofluorescence

Immunofluorescence of purified MaxPab antibody to PSMD10 on HeLa cell. [antibody concentration 40 ug/ml]

## Gene Info — PSMD10

Entrez GeneID	<a href="#">5716</a>
GeneBank Accession#	<a href="#">NM_002814</a>
Protein Accession#	<a href="#">NP_002805.1</a>
Gene Name	PSMD10
Gene Alias	dJ889N15.2, p28
Gene Description	proteasome (prosome, macropain) 26S subunit, non-ATPase, 10
Omim ID	<a href="#">603480</a>
Gene Ontology	<a href="#">Hyperlink</a>

**Gene Summary**

The 26S proteasome is a multicatalytic proteinase complex with a highly ordered structure composed of 2 complexes, a 20S core and a 19S regulator. The 20S core is composed of 4 rings of 28 non-identical subunits; 2 rings are composed of 7 alpha subunits and 2 rings are composed of 7 beta subunits. The 19S regulator is composed of a base, which contains 6 ATPase subunits and 2 non-ATPase subunits, and a lid, which contains up to 10 non-ATPase subunits. Proteasomes are distributed throughout eukaryotic cells at a high concentration and cleave peptides in an ATP/ubiquitin-dependent process in a non-lysosomal pathway. An essential function of a modified proteasome, the immunoproteasome, is the processing of class I MHC peptides. This gene encodes a non-ATPase subunit of the 19S regulator. Two transcripts encoding different isoforms have been described. Pseudogenes have been identified on chromosomes 3 and 20. [provided by RefSeq]

**Other Designations**

26S proteasome non-ATPase regulatory subunit 10|26S proteasome regulatory subunit p28|OTTHUMP00000023827|OTTHUMP00000023828|ankyrin repeat protein|gankyrin|hepatocellular carcinoma-associated protein p28-III|proteasome 26S non-ATPase subunit 10