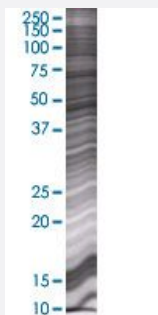


PSMD9 293T Cell Transient Overexpression Lysate(Denatured)

Catalog # H00005715-T01

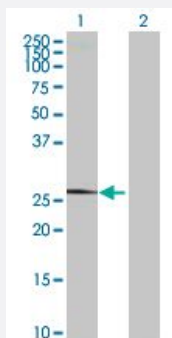
Size 100 uL

Applications



SDS-PAGE Gel

PSMD9 transfected lysate.



Western Blot

Lane 1: PSMD9 transfected lysate (24.64 KDa)

Lane 2: Non-transfected lysate.

Specification

Transfected Cell Line 293T

Plasmid pCMV-PSMD9 full-length

Host Human

Theoretical MW (kDa) 24.64

Quality Control Testing Transient overexpression cell lysate was tested with Anti-PSMD9 antibody ([H00005715-B01](#)) by Western Blots.
SDS-PAGE Gel
PSMD9 transfected lysate.
Western Blot
Lane 1: PSMD9 transfected lysate (24.64 KDa)
Lane 2: Non-transfected lysate.

Storage Buffer

1X Sample Buffer (50 mM Tris-HCl, 2% SDS, 10% glycerol, 300 mM 2-mercaptoethanol, 0.01% Bromophenol blue)

Storage Instruction

Store at -80°C. Aliquot to avoid repeated freezing and thawing.

Applications

- Western Blot

Gene Info — PSMD9

Entrez GeneID[5715](#)**GeneBank Accession#**[NM_002813.4](#)**Protein Accession#**[NP_002804.2](#)**Gene Name**

PSMD9

Gene Alias

MGC8644, Rpn4, p27

Gene Description

proteasome (prosome, macropain) 26S subunit, non-ATPase, 9

Omim ID[603146](#)**Gene Ontology**[Hyperlink](#)**Gene Summary**

The 26S proteasome is a multicatalytic proteinase complex with a highly ordered structure composed of 2 complexes, a 20S core and a 19S regulator. The 20S core is composed of 4 rings of 28 non-identical subunits; 2 rings are composed of 7 alpha subunits and 2 rings are composed of 7 beta subunits. The 19S regulator is composed of a base, which contains 6 ATPase subunits and 2 non-ATPase subunits, and a lid, which contains up to 10 non-ATPase subunits. Proteasomes are distributed throughout eukaryotic cells at a high concentration and cleave peptides in an ATP/ubiquitin-dependent process in a non-lysosomal pathway. An essential function of a modified proteasome, the immunoproteasome, is the processing of class I MHC peptides. This gene encodes a non-ATPase subunit of the 19S regulator. [provided by RefSeq]

Other Designations

26S proteasome regulatory subunit p27|homolog of rat Bridge 1|proteasome 26S non-ATPase regulatory subunit 9|proteasome 26S non-ATPase subunit 9

Disease

- [Depressive Disorder](#)

- [Diabetes Mellitus](#)
- [Genetic Predisposition to Disease](#)
- [Inflammation](#)