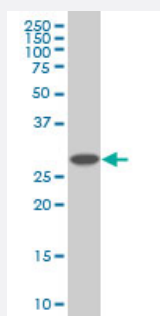


PSMD9 monoclonal antibody (M01), clone 3A4

Catalog # H00005715-M01

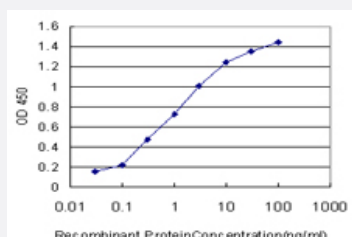
Size 100 ug

Applications



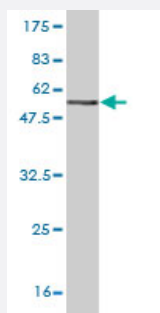
Western Blot (Cell lysate)

PSMD9 monoclonal antibody (M01), clone 3A4 Western Blot analysis of PSMD9 expression in HepG2 (Cat # L019V1).



Sandwich ELISA (Recombinant protein)

Detection limit for recombinant GST tagged PSMD9 is approximately 0.03ng/ml as a capture antibody.



Western Blot detection against Immunogen (50.27 KDa) .

Specification

Product Description

Mouse monoclonal antibody raised against a full length recombinant PSMD9.

Immunogen	PSMD9 (AAH02383, 1 a.a. ~ 223 a.a) full-length recombinant protein with GST tag. MW of the GST tag alone is 26 KDa.
Sequence	MSDEEARQSGGSSQAGVVTVSDVQELMRRKEEIEAQIKANYDVLESQKGIGMNEPLVDCEGYPRSDVDLYQVRTARHNIICLQNDHKAVMKQVEEALHQLHARDKEKQARDMAEAHKEAMSRKLGQSESQGPPRAFAKVNSISPGSPASIAGLQVDDEIVEFGSVNTQNFQSLHNIGSVVQHSEGKPLNVTVIRRGEKHQLRLVPTRWAGKGLLGCNIIPLQR
Host	Mouse
Reactivity	Human
Isotype	IgG1 Kappa
Quality Control Testing	Antibody Reactive Against Recombinant Protein. Western Blot detection against Immunogen (50.27 KDa) .
Storage Buffer	In 1x PBS, pH 7.4
Storage Instruction	Store at -20°C or lower. Aliquot to avoid repeated freezing and thawing.

Applications

- Western Blot (Cell lysate)

PSMD9 monoclonal antibody (M01), clone 3A4 Western Blot analysis of PSMD9 expression in HepG2 (Cat # L019V1).

[Protocol Download](#)

- Western Blot (Recombinant protein)

[Protocol Download](#)

- Sandwich ELISA (Recombinant protein)

Detection limit for recombinant GST tagged PSMD9 is approximately 0.03ng/ml as a capture antibody.

[Protocol Download](#)

- ELISA

Gene Info — PSMD9

Entrez GeneID [5715](#)

GeneBank Accession# [BC002383](#)

Protein Accession#	AAH02383
Gene Name	PSMD9
Gene Alias	MGC8644, Rpn4, p27
Gene Description	proteasome (prosome, macropain) 26S subunit, non-ATPase, 9
Omim ID	603146
Gene Ontology	Hyperlink
Gene Summary	<p>The 26S proteasome is a multicatalytic proteinase complex with a highly ordered structure composed of 2 complexes, a 20S core and a 19S regulator. The 20S core is composed of 4 rings of 28 non-identical subunits; 2 rings are composed of 7 alpha subunits and 2 rings are composed of 7 beta subunits. The 19S regulator is composed of a base, which contains 6 ATPase subunits and 2 non-ATPase subunits, and a lid, which contains up to 10 non-ATPase subunits. Proteasomes are distributed throughout eukaryotic cells at a high concentration and cleave peptides in an ATP/ubiquitin-dependent process in a non-lysosomal pathway. An essential function of a modified proteasome, the immunoproteasome, is the processing of class I MHC peptides. This gene encodes a non-ATPase subunit of the 19S regulator. [provided by RefSeq]</p>
Other Designations	26S proteasome regulatory subunit p27 homolog of rat Bridge 1 proteasome 26S non-ATPase regulatory subunit 9 proteasome 26S non-ATPase subunit 9

Disease

- [Depressive Disorder](#)
- [Diabetes Mellitus](#)
- [Genetic Predisposition to Disease](#)
- [Inflammation](#)